

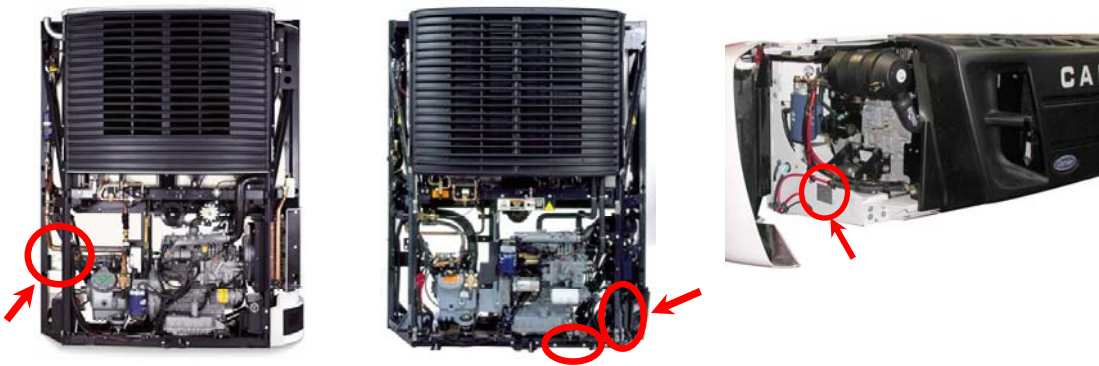
# Carrier TRU Reporting for ARB Equipment Registration (ARBER)



Per TRU Advisory 08-06, you need the unit make, model, model year and serial number to register the TRU. Registration is mandatory for California based fleets and voluntary for non-California based fleets.

## STEP 1: ID your Fleet

Locating the TRU Serial Number



Carrier		Athens, Ga.	
Model Name:	X2 2100A		
Serial No.:	NAE91228607		
Model No.:	NDL934L.A-AB-B		
Warranty ID:	T0037		
Refrigerant:	R404A 20 lbs.		
Max. Op. Press. LP:	100psig / HP: 445psig		
COMPONENT	MONTHS	MONTH	
Basic Unit	12	1	2
Engine	24	3	6
Compressor	24	3	6
Elec. Step. Vlv.	24	3	6
Refr. Coils/Rad	24	3	6
Solenoid Valves	24	3	6
Microprocessor	24	3	6
Gear Box	24	3	6
Fan Shaft	24	3	6
Fuel Pumps	24	3	6
Standby Motor			
Union: Parts & Labor: Unlimited Hours 8000: Parts & Labor: 8000 Hour Limit			
DATE IN SERVICE		DAY	
1	2	3	4
5	6	7	8
9	10	11	12
13	14	15	16
17	18	19	20
21	22	23	24
25	26	27	28
29	30	31	
YEAR 2010 2011 2012 2013			
Made in USA			

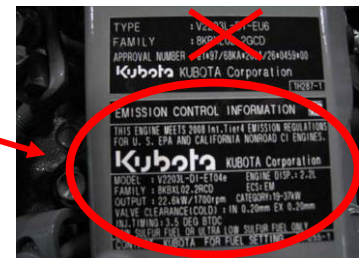
Unit Serial Number Label

## STEP 2: ID your Engine

Locating the Engine Emissions Labels



Emissions Labels



# STEP 3: Register with CARB

**Fill Out: TRANSPORT REFRIGERATION UNIT ATCM MODEL-ENGINE-COMPLIANCE INFORMATION FORM SSD/EAB-FORM #TRU-MEC (#30)**

[http://www.arb.ca.gov/arber/documents/trudocs/tru\\_mec\\_05\\_09.pdf](http://www.arb.ca.gov/arber/documents/trudocs/tru_mec_05_09.pdf)

## Enter TRU Unit Information

**TRU/TRU Generator Set Unit Information** \*indicates required field

Provide TRU/TRU Generator Set unit information here. Do not provide engine information on this page. The engine information must be entered on the compliance information page (page 3 of this form).

TRU/TRU Generator Set Unit Type\*  TRU  TRU Generator Set

TRU/TRU Generator Set Unit Manufacturer\*

TRU/TRU Generator Set Unit Model\*

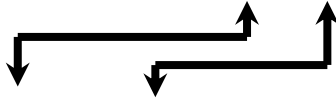
TRU/TRU Generator Set Unit Model Year\*

TRU/TRU Generator Set Unit Serial Number\*

TRU/TRU Generator Set Unit ID

Use the TRU serial number to determine the model year.

Sample Serial Number: **ABC12345678**



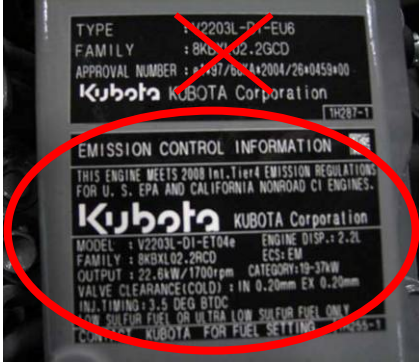
If the 1 <sup>st</sup> digit is	and the 3 <sup>rd</sup> digit is	TRU Model Year is
A thru G	A thru Z	2001 or earlier
H	A thru M	
H	N thru Z	2002
J	A	
J	B thru N	2003
J	P thru Z	2004
K	A or B	
K	C thru P	2005
K	R thru Z	2006
L	A thru C	
L	D thru R	2007
L	S thru Z	2008
M	A thru D	
M	E thru S	2009
M	T thru Z	2010
N	A thru E	
N	F thru T	2011



Unit Serial Number Label

Enter TRU Engine Information

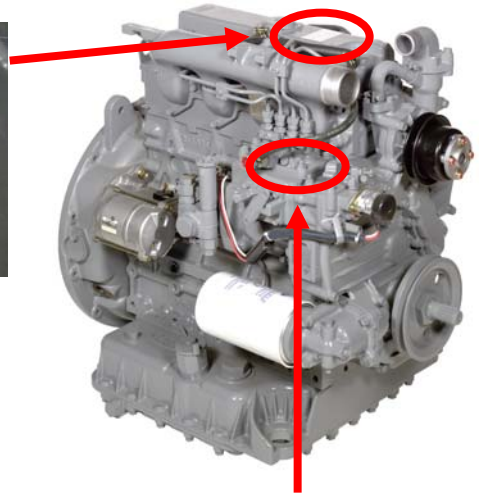
<b>TRU Engine Information (all fields required)</b>		<input type="checkbox"/> <25HP (<19kW)
TRU Engine Manufacturer	<input type="text" value="Kubota"/>	Power Rating <input type="checkbox"/> ≥25HP (≥19kW)
TRU Engine Model	<input type="text"/>	TRU Engine Model Year <input type="text"/>
TRU Engine Serial Number	<input type="text"/>	



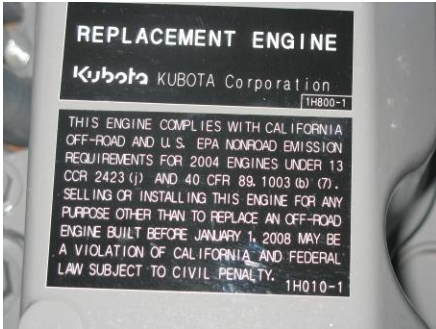
Engine Model, Model Year & Power Rating



Serial Number



Alternate Serial Number location Stamped on engine block



Engines incorporating this REPLACEMENT ENGINE label on the valve cover are Tier 2 engines and are considered a 2007 Engine Model Year regardless of engine build year.

**STEP 4: Contact your local Carrier Transicold Dealer**

[www.trucktrailer.carrier.com](http://www.trucktrailer.carrier.com)  
[www.transportparts.carrier.com](http://www.transportparts.carrier.com)

