

Appendix C

Industry Survey Form



Terry Tamminen
Agency Secretary

Air Resources Board

Alan C. Lloyd, Ph.D.
Chairman

1001 I Street • P.O. Box 2815
Sacramento, California 95812 • www.arb.ca.gov



Arnold Schwarzenegger
Governor

April 12, 2004

Dear Sir or Madam:

This letter is to notify you that the California Air Resources Board (CARB) will be conducting a telephone survey of chromium plating and chromic acid anodizing operations to develop an emissions inventory for calendar year 2003. The emissions data and other information about your operation will help us in the evaluation of the Airborne Toxic Control Measure (ATCM) for Chromium Plating and Chromic Acid Anodizing operations.

We are aware that you have reported some information about your operation to your air pollution control district *via* your initial and ongoing compliance reports. We have evaluated those reports and have gathered some of the information we need. However, to complete our data set, some additional information is needed. We would like your cooperation in answering a short questionnaire by telephone. To facilitate the telephone survey, and allow you time to compile the information, I have enclosed a copy of the questions we will be asking. We intend to begin making calls to collect the information beginning April 26.

We are requesting this information in accordance with California Health and Safety Code sections 39607, 39701, 41511, and 42303; and title 17, California Code of Regulations section 91100. These sections of State law require owners and operators of sources of air pollution to submit information needed to help CARB estimate atmospheric emissions and carry out other responsibilities.

Thank you in advance for your assistance in this effort. If you have any questions, please contact Ms. Shobna Sahni at (626) 575-7039 or e-mail spandhoh@arb.ca.gov.

Sincerely,

/S/

Janette Brooks, Chief
Air Quality Measures Branch
Stationary Source Division

Enclosure

cc: See next page

The energy challenge facing California is real. Every Californian needs to take immediate action to reduce energy consumption. For a list of simple ways you can reduce demand and cut your energy costs, see our Website: <http://www.arb.ca.gov>.

California Environmental Protection Agency

Sir or Madam
April 12, 2004
Page 2

cc:

Mr. Randy Frazier
Bay Area Air Quality Management District
939 Ellis Street
San Francisco, California 94109

Mr. David Jones
South Coast Air Quality Management District
21865 Copley Drive
Diamond Bar, California 91765

Ms. Loni Adams
Sacramento Metropolitan Air Quality Management District
777 12th Street 3rd Floor
Sacramento, California 95814

Mr. Archie de la Cruz
San Diego Air Pollution Control District
9150 Chesapeake Drive
San Diego, California 92123

Mr. Martin Keast
San Joaquin Valley Unified Air Pollution Control District
1990 E. Gettysburg Avenue
Fresno, California 93726

Mr. Junio Donal
County of Shasta Air Quality Management District
1855 Placer Street
Redding, California 96001

Ms. Terri Thomas
Ventura County Air Pollution Control District
669 County Square Drive
Ventura, California 93003

Ms. Shobna Sahni
Technical Evaluation Section
Air Quality Measures Branch

Chromium Plating Questionnaire

Type of business: (check all that apply)

- Hard
- Decorative
- Trivalent Chromium plating
- Chromic Acid Anodizing

Total Ampere-hour usage for calendar year 2003:

- Hard: _____ Amp-hrs
- Decorative: _____ Amp-hrs
- Trivalent: _____ Amp-hrs
- Anodizing: _____ Amp-hrs

Range of current applied (amperes) when plating:

- 0 – 500
- 0 - 1,000
- 0 – 5,000 or above

Do you have any in tank controls for your chrome plating or anodizing tank?

Polyballs?

- No
- Yes

Chemical fume suppressants?

- No
- Yes

Name: _____
Manufacturer: _____
Annual usage: _____ lbs

Do you have any add-on pollution control equipment or forced ventilation for your chrome plating or anodizing tank?

- No
- Yes
 - > Please describe (example, HEPA filter, mesh pad, mist eliminator) _____
 - > What month and year was the source test done? _____
 - > What was the average results in mg/amp-hr? _____

What kind of plating line do you have?

- Manual – no hoist
- Automatic / hoist line

Do you perform any grinding and polishing work at your facility? _____

How do you store your chemicals? _____

Appendix D
Supplier Survey Form



Terry Tamminen
Agency Secretary

Air Resources Board

Alan C. Lloyd, Ph.D.
Chairman

1001 I Street • P.O. Box 2815
Sacramento, California 95812 • www.arb.ca.gov



Arnold Schwarzenegger
Governor

November 29, 2004

Dear Sir or Madam:

Through this letter I am transmitting a brief questionnaire to help us better understand services provided by your company for the hexavalent chromium plating and chromic acid anodizing industry in California. The California Air Resources Board (ARB) is gathering information on chemical fume suppressants, as well as information on plating bath maintenance, as part of our evaluation of the State's Airborne Toxic Control Measure (ATCM) for Chromium Plating and Chromic Acid Anodizing operations. We are asking for: 1) information on fume suppressants sold in California, including formulation data, mechanism of reducing hexavalent chromium emissions, and cost; and 2) information on acceptable contaminant levels in decorative hexavalent chromium plating baths.

We are requesting this information in accordance with California Health and Safety Code sections 39607, 39701, and 41511, and title 17, California Code of Regulations (CCR) section 91100. These sections authorize ARB to **require** the submission of information needed to estimate atmospheric emissions and to carry out its other statutory responsibilities. Associated laws and regulations may be found at the following website: www.arb.ca.gov/html/lawsregs.htm.

Enclosure A to this letter is the questionnaire to be completed. If your company manufactures or sells more than one chemical fume suppressant for use in chromium plating and/or anodizing operations, please copy Enclosure A and fill out one form for each product. The address to mail your completed forms is provided in Enclosure A and data are due no later than January 17, 2005.

State law protects the confidentiality of trade secrets (title 17, CCR, sections 91000-91022). The Confidentiality Information Form (Enclosure B) provides a summary of the regulations and must be filled out if you wish to designate information as confidential. ARB has many years of experience in handling confidential information and takes its responsibility very seriously. All confidential information will be kept in specifically designated, locked file cabinets and will only be accessible to authorized ARB staff on an "as needed" basis. All information that is designated as confidential will be handled in strict accordance with ARB confidentiality regulations and policies.

The energy challenge facing California is real. Every Californian needs to take immediate action to reduce energy consumption. For a list of simple ways you can reduce demand and cut your energy costs, see our Website: <http://www.arb.ca.gov>.

California Environmental Protection Agency

Printed on Recycled Paper

Sir or Madam

November 29, 2004

Page 2

Thank you in advance for your assistance in this effort. If you have any questions, please contact Ms. Shobna Sahni at (626) 575-7039 or via email at spandhoh@arb.ca.gov or Ms. Carla Takemoto at (916) 324-8028 or via email at ctakemot@arb.ca.gov.

Sincerely,



Janette Brooks, Chief
Air Quality Measures Branch
Stationary Source Division

Enclosure A: Chemical Fume Suppressant Manufacturer Questionnaire

Enclosure B: Confidential Information Submittal Form

cc: Ms. Shobna Sahni
Technical Evaluation Section
Air Quality Measures Branch

Ms. Carla Takemoto
Technical Evaluation Section
Air Quality Measures Branch

Step 3. Fume Suppressant – Mechanism of Reducing Emissions

Product Name _____ Company Name _____

Does the fume suppressant reduce surface tension as the method for controlling emissions? (Yes/No) _____

If yes, what is the optimum surface tension (at which successful plating can still be conducted) for emission reduction? (dynes/cm)

Does the fume suppressant create a foam blanket as the method for controlling emissions? (Yes/No) _____

If yes, how thick must the foam blanket be to maximize emission reduction? (inches):

How long does it take to form the foam blanket? (minutes): _____

Is this product a concentrate? (Yes/No) _____

If yes, what is the dilution ratio? _____

Does the company have any emissions data for when this product is used? (Yes/No)?
_____ (If Yes, please provide a copy with your submittal)

Other Comments: _____

Step 4. Fume Suppressant – Cost Information

Please provide cost per gallon or pound for each fume suppressant: _____

Step 5. Bath Maintenance - Decorative Hexavalent Chromium Plating Baths**Contaminants:**

For decorative hexavalent chromium plating baths, record the level of each bath contaminant that you consider acceptable before clean-up would be recommended.

Contaminant	Acceptable Level
Trivalent Chromium (oz/gal)	_____
Iron (ppm)	_____
Nickel (ppm)	_____
Copper (ppm)	_____
Chloride (ppm)	_____
Other _____	_____
Other _____	_____

Comments:

CONFIDENTIAL INFORMATION SUBMITTAL FORM

If you wish to designate any information contained in your survey data as **CONFIDENTIAL INFORMATION**, please provide the data requested below and return it with your completed survey forms.

In accordance with Title 17, California Code of Regulations (CCR), sections 91000 to 91022, and the California Public Records Act (Government Code section 6250 et seq.), the information that a company provides to the Air Resources Board (ARB) may be released: (1) to the public upon request, except trade secrets which are not emissions data or other information which is exempt from disclosure or the disclosure of which is prohibited by law; (2) to the U.S. Environmental Protection Agency (EPA), which protects trade secrets as provided in section 114(c) of the Clean Air Act and amendments thereto (42 USC 7401 et seq.) and in federal regulation; and (3) to other public agencies provided that those agencies preserve the protections afforded information which is identified as a trade secret, or otherwise exempt from disclosure by law (section 39660(e)).

Trade secrets as defined in Government Code section 6254.7 are not public records and therefore will not be released to the public. However, the California Public Records Act provides that air pollution emission data are always public records, even if the data comes within the definition of trade secrets. On the other hand, the information used to calculate emissions is a trade secret.

If any company believes that any of the information it may provide is a trade secret or otherwise exempt from disclosure under any other provision of law, **it must identify the confidential information as such at the time of submission to the ARB and must provide the name, address, and telephone number of the individual to be consulted**, if the ARB receives a request for disclosure or seeks to disclose the data claimed to be confidential. The ARB may ask the company to provide documentation of its claim of trade secret or exemption at a later date. Data identified as confidential will not be disclosed unless the ARB determines, in accordance with the above referenced regulations, that the data do not qualify for a legal exemption from disclosure. The regulations establish substantial safeguards before any such disclosure.

In accordance with the provisions of Title 17, California Code of Regulations, sections 91000 to 91022, and the California Public Records Act (Government Code sections 6250 et seq.);

Company Name:

_____ declares that only those portions specifically identified and submitted in response to the California Air Resources Board's information request on the survey are confidential "**trade secret**" information, and requests that it be protected as such from public disclosure. All inquiries pertaining to the confidentiality of this information should be directed to the following person:

Name (please print): _____

Signature: _____

Title: _____

Telephone #: _____

Company Address: _____

Appendix E

Economic Survey Forms



Air Resources Board



Alan C. Lloyd, Ph.D.
Agency Secretary

1001 I Street • P.O. Box 2815
Sacramento, California 95812 • www.arb.ca.gov

Arnold Schwarzenegger
Governor

February 7, 2005

Dear Sir or Madam:

I am writing to notify you that the California Air Resources Board (ARB) will be telephoning you to obtain economic data for calendar year 2003. The brief questions, (shown in the box below) regarding your annual revenue and employee information, will provide data for the economic impact assessment we will conduct as we evaluate changes to the Airborne Toxic Control Measure (ATCM) for Chromium Plating and Chromic Acid Anodizing operations.

I appreciate that you have already provided emissions data and other information from our previous chrome plating questionnaire. We would like your cooperation again in answering these three questions by telephone. It would be helpful if you could fill in the requested information prior to receiving our call. We intend to start making calls to collect the information beginning February 21.

1. Gross Annual Revenue for 2003:

- | | |
|---|--|
| <input type="checkbox"/> Less than \$1,000,000 | <input type="checkbox"/> \$5,000,001 to 10,000,000 |
| <input type="checkbox"/> \$1,000,001 to \$5,000,000 | <input type="checkbox"/> Greater than \$10,000,000 |

2. Total number of employees: _____

3. Number of employees working in the chrome plating line: _____

We are requesting this information in accordance with California Health and Safety Code sections 39607, 39701, 41511, and 42303; and title 17, California Code of Regulations section 91100. These sections of State law require owners and operators of sources of air pollution to submit information needed to help ARB estimate atmospheric emissions and carry out other responsibilities.

I want to assure you that the information you provide will be kept confidential. ARB has many years of experience in handling confidential information and takes its responsibilities very seriously. All confidential information will be kept in locked file cabinets and will only be accessible to authorized staff.

The energy challenge facing California is real. Every Californian needs to take immediate action to reduce energy consumption. For a list of simple ways you can reduce demand and cut your energy costs, see our Website: <http://www.arb.ca.gov>.

California Environmental Protection Agency

Sir or Madam

February 7, 2005

Page 2

Thank you in advance for your assistance in this effort. If you have any questions, please contact Ms. Zuzana Vona at (916) 323-9688, or e-mail zvona@arb.ca.gov.

Sincerely,



Janette Brooks, Chief
Air Quality Measures Branch
Stationary Source Division

cc: See next page

Sir or Madam

February 7, 2005

Page 3

cc: Mr. Randy Frazier
Bay Area Air Quality Management District
939 Ellis Street
San Francisco, California 94109

Mr. David Jones
South Coast Air Quality Management District
21865 Copley Drive
Diamond Bar, California 91765

Ms. Loni Adams
Sacramento Metropolitan Air Quality Management District
777 12th Street, 3rd Floor
Sacramento, California 95814

Mr. Archie de la Cruz
San Diego Air Pollution Control District
9150 Chesapeake Drive
San Diego, California 92123

Mr. Martin Keast
San Joaquin Valley Unified Air Pollution Control District
1990 East Gettysburg Avenue
Fresno, California 93726

Mr. Junio Donal
Shasta County Air Quality Management District
1855 Placer Street
Redding, California 96001

Ms. Terri Thomas
Ventura County Air Pollution Control District
669 County Square Drive
Ventura, California 93003

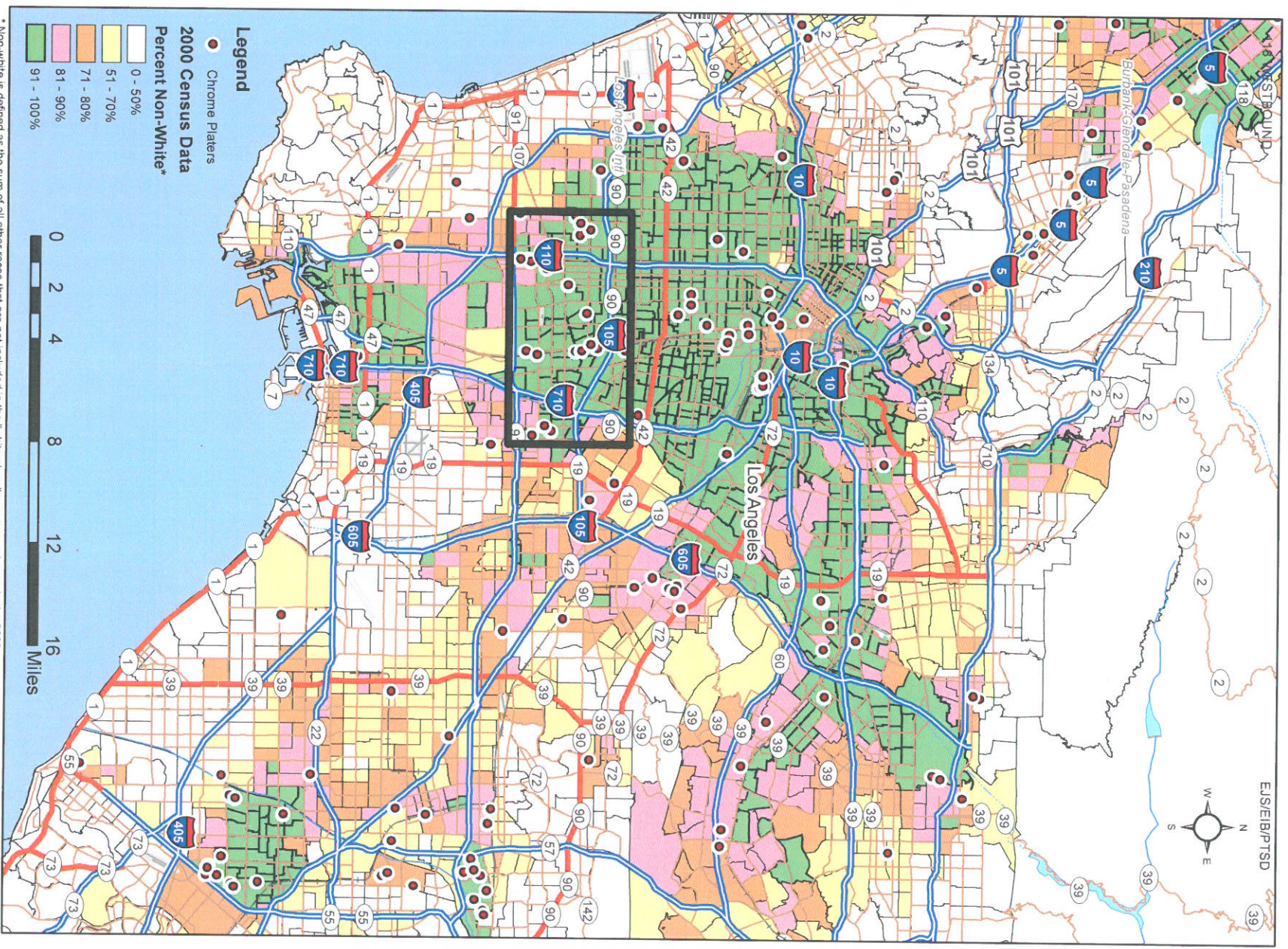
Ms. Zuzana Vona
Technical Evaluation Section
Air Quality Measures Branch

Appendix I

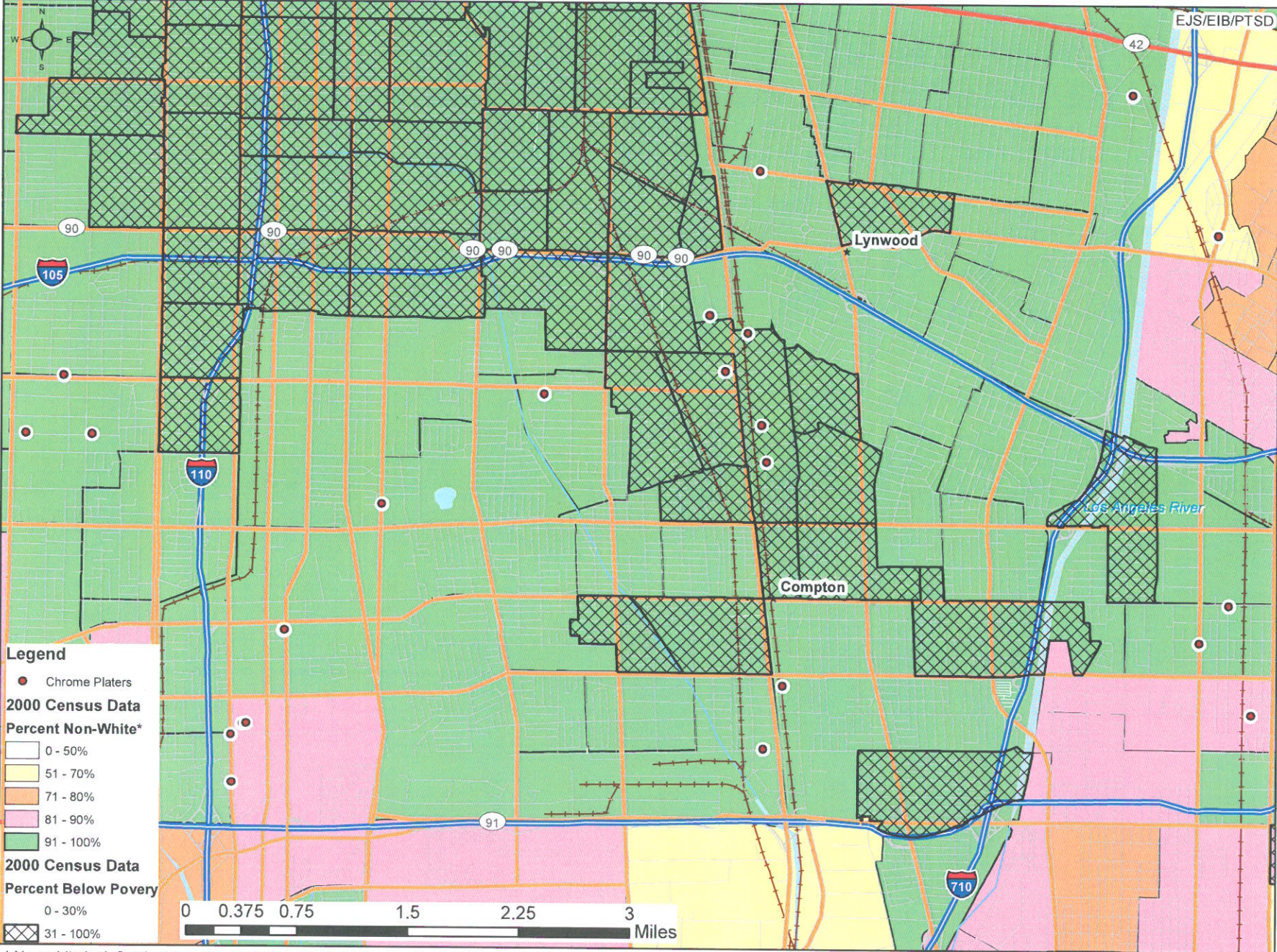
Analysis of Proximity of Chromium Plating and Chromic Acid Anodizing Facilities in Southern California

Appendix I - Chart 1

Los Angeles Area - Percent Non-White



* Non-white is defined as the sum of all other races that are not included in the "white-alone" one-race category in the 2000 census data prepared by the U.S. Census Bureau.



* Non-white is defined as the sum of all other races that are not included in the "white-alone" one-race category in the 2000 census data prepared by the U.S. Census Bureau.

Compton Area -- % Non-White and % Below Poverty

