



*View of the American River in Sacramento County*

## Building Resilience through Collaboration - Sacramento County

Judy Robinson, Sustainability Manager

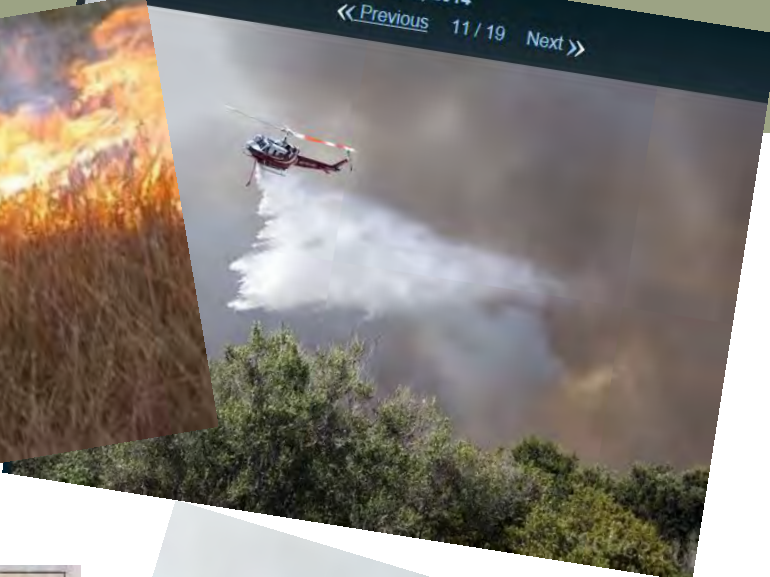
[RobinsonJu@saccounty.net](mailto:RobinsonJu@saccounty.net)

(916) 874-4551

# SACRAMENTO COUNTY



GRASS FIRE AT CAL EXPO ON JULY 4, 2014  
« Previous 11 / 19 Next »



Sacramento Bee – August 3, 2014



Michael Rondou Special to The Bee  
Firefighters battle fast-moving flames Saturday on the American River Parkway near Cal Expo. A fire near the fairgrounds





## Drought taking a bite out of food budgets



**\$150 Million For Sacramento Region Flood Control Projects**



## County's W. Nile spray draws concern

**FOES FEAR RISKS  
DESPITE SAFETY  
ASSURANCES**

By EDWARD ORTIZ  
[eortiz@sacbee.com](mailto:eortiz@sacbee.com)

Concerned about an increase in the number of insects and birds testing positive for West Nile virus this summer, the local mosquito abatement district is once again using planes to



- Rising temperatures-heat related illness & deaths
- Fires – damaged tree health, increased rates of asthma & respiratory disease
- Drought – water quality, electricity, agriculture impacts- food illnesses, fire, natural ecosystems.
- Flooding-endanger homes, crops, water supply, salt water intrusion
- *Disproportional impacts on vulnerable communities*
- Infrastructure failure- roadways, energy delivery
- Endangered Natural Systems and biodiversity-clean water (blue-green algae), air, habitat
- Risk to agriculture and economy-food insecurity



## Build Resilient & Sustainable Communities !



### Goals & Principles

Walkability

Connectivity

Mixed of Uses

Diversity of Housing

Quality Urban Design

Increased Density

Transportation Choices

Quality of Life

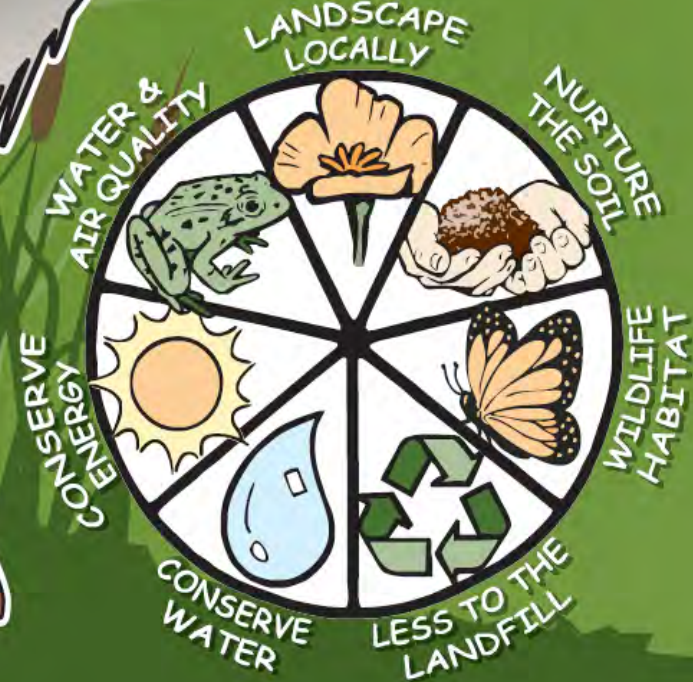
THE NEIGHBORHOOD

Winn Communities  
Village Properties

- Energy Conservation
- Water Conservation
- Waste Reduction
- Air & Water Quality Protection



## THE 7 PRINCIPLES OF RIVER-FRIENDLY LANDSCAPING



Learn more about River-Friendly Landscaping

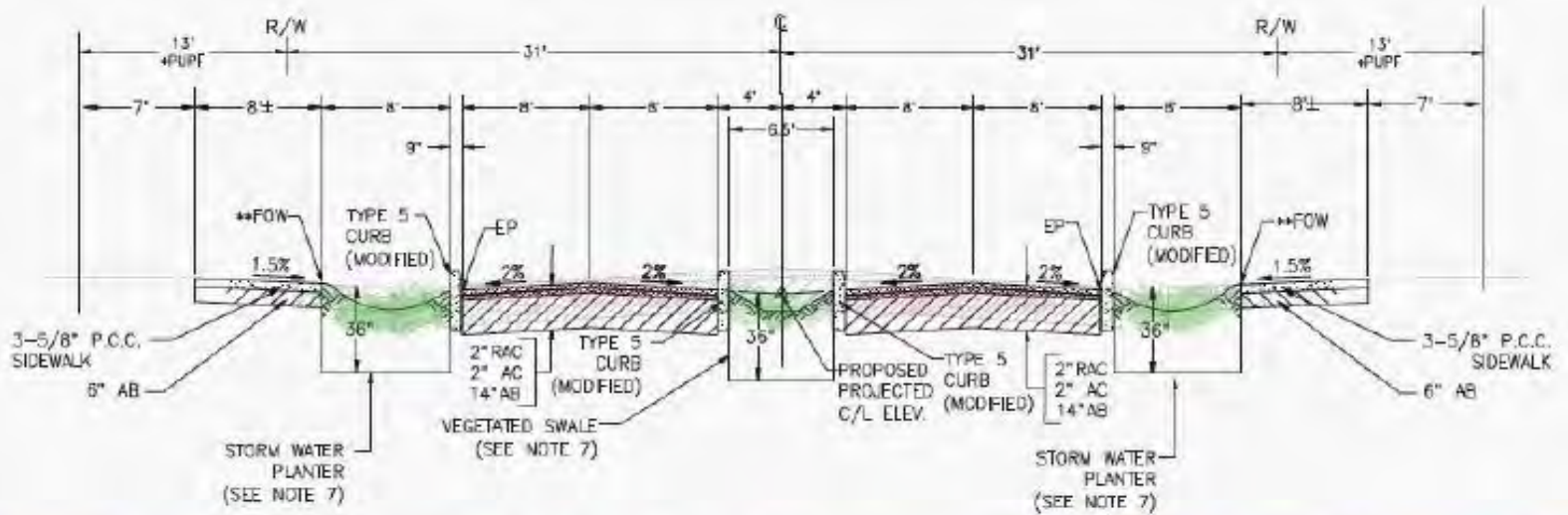
[www.riverfriendly.org](http://www.riverfriendly.org)

SACRAMENTO



STORMWATER  
QUALITY  
PARTNERSHIP







# SACRAMENTO COUNTY

Before



After.....

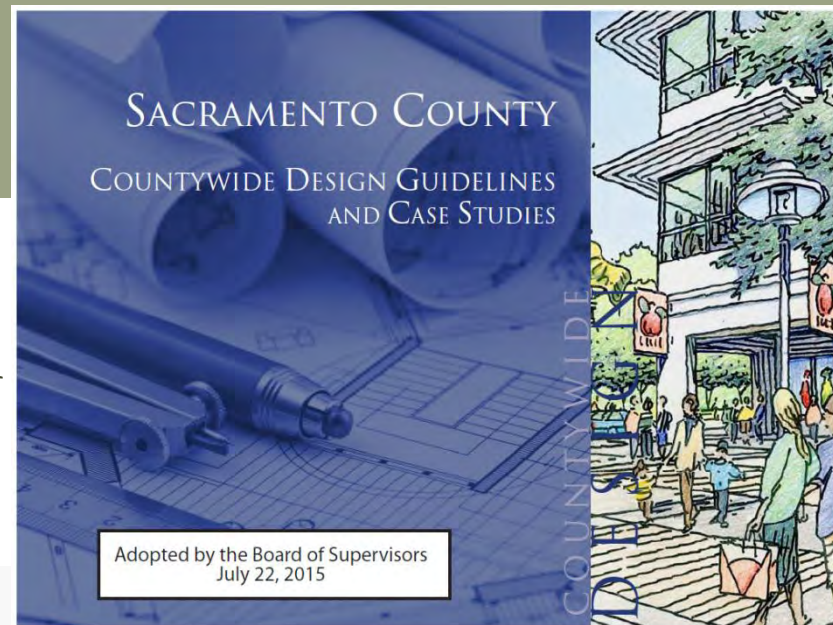




### Good "Complete Street" Design







## Sustainable Building Design

### Design Guidelines

- **Utilize sustainable design strategies** in building design and reflect this practice in the site design, building orientation, on-site storm water management, and material selection.
- Employ energy conservation strategies including **shading devices and use of trees to reduce the heat gain of buildings and parking lots; selection of colors to reduce heat gain;** and use of high-quality insulation materials to reduce energy consumption (especially the use of air conditioning during hot summer months), to the greatest extent possible.
- **Use water conserving features** in irrigation systems and drought-tolerant plants in landscaping.







-  Energy Projects
-  Waste & Recycling Projects
-  Transportation Projects
-  Water Projects
-  Ag & Open Spaces Projects

## Green Team – cross departmental and agency





Provides a forum for both local and regional organizations that are already tackling resilience, and new partners who need that collaboration to succeed.

Through greater coordination and collaboration, the Sacramento Region can adapt to known and predicted impacts; creating stronger, sustainable, and more economically viable communities.







## Community Dashboard

Location Type:  Location:   
Breakout By:  Order By:   
Search All Indicators

- [Health](#)
- [Economy](#)
- [Education](#)
- [Government & Politics](#)
- [Public Safety](#)
- [Social Environment](#)

Indicators for County: Sacramento

### + Health

## Respiratory Diseases

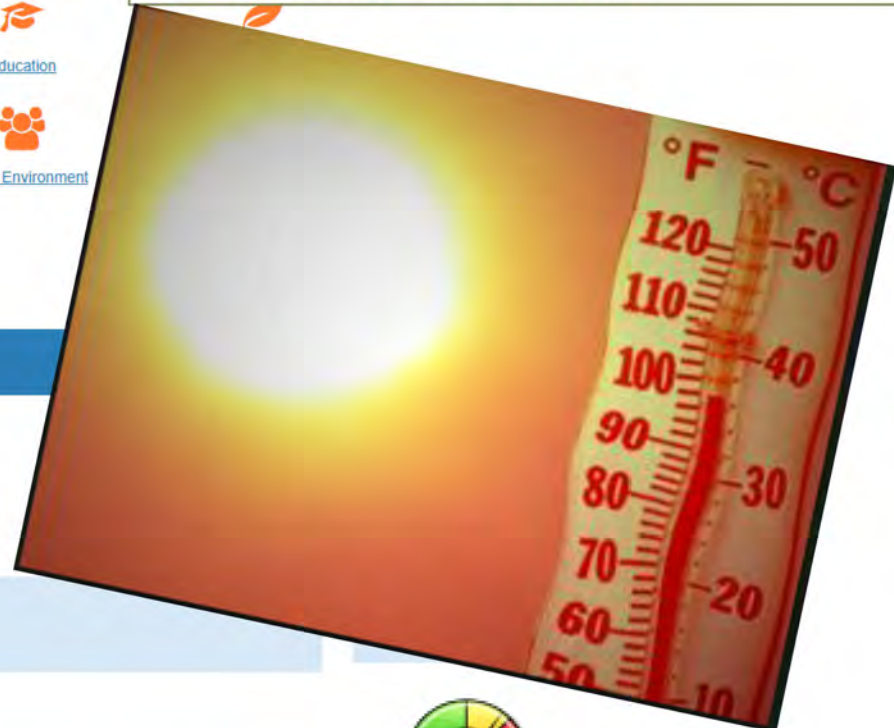
Adults with Asthma



Age-Adjusted Hospitalization Rate due to Adult Asthma



Age-Adjusted Hospitalization Rate due to Asthma





- Link health outcomes to climate mitigation strategies.
- Create dialogue and partnerships between public health agencies and climate action planners- leverage the strengths, skills, and resources of multiple agencies.
- Have meaningful participation of residents and a high level of community engagement to identify locally relevant strategies, and improve implementation.

**Climate Action for Health:**  
Integrating Public Health into  
Climate Action Planning







“We’re talking about reversing three generations’ worth of building decisions that have created these heartless, thoughtless built environments.”

“We need more-accessible healthy food, more parks, more farmers’ markets, more bike routes in towns.”

“We need to develop and have visions of things that are healthy, that are beautiful, that are friendly to the planet, and friendly to our health.”

-Dr. Richard Jackson





# Thank You

Judy Robinson, Sustainability Manager  
[RobinsonJu@saccounty.net](mailto:RobinsonJu@saccounty.net) (916) 874-4551

Karen Olson, Human Services Program Planner  
[OlsonK@saccounty.net](mailto:OlsonK@saccounty.net) (916) 875-6515