

Staff Presentation



June 27, 2018

Interface Between Air Quality, Climate Change, and Transportation

>95% of harmful
particulates

>80% of emissions that
contribute to smog

50% of all greenhouse
gas emissions



California's Legislative Leadership and Federal Requirements

- 40% reduction in GHG emissions by 2030
- Attain health-based air quality requirements
- Minimize health risk from exposure to toxics
- Double energy efficiency savings & support for clean cars
- Integrate land use, transit, and affordable housing to curb auto trips
- Identify air pollution, health & social benefits of climate policies
- Invest in disadvantaged communities

California's 2030 Vision

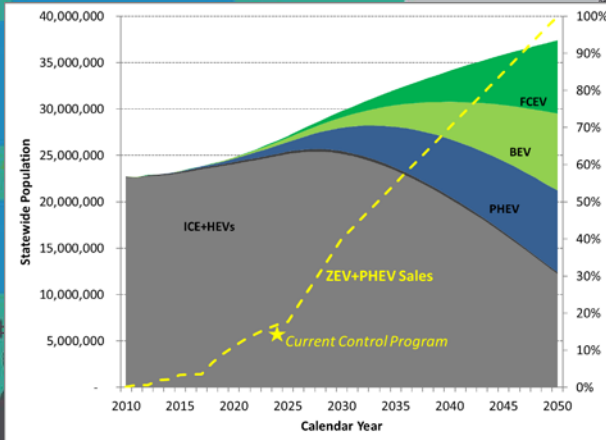
CLEAN ENERGY & FUELS

- At least 50% renewable electricity
- 20% carbon intensity reduction

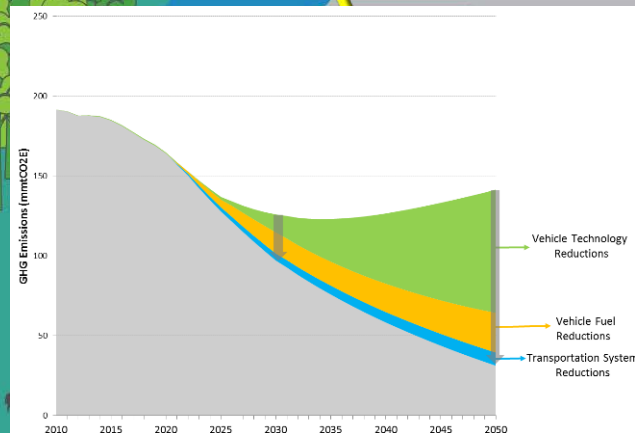
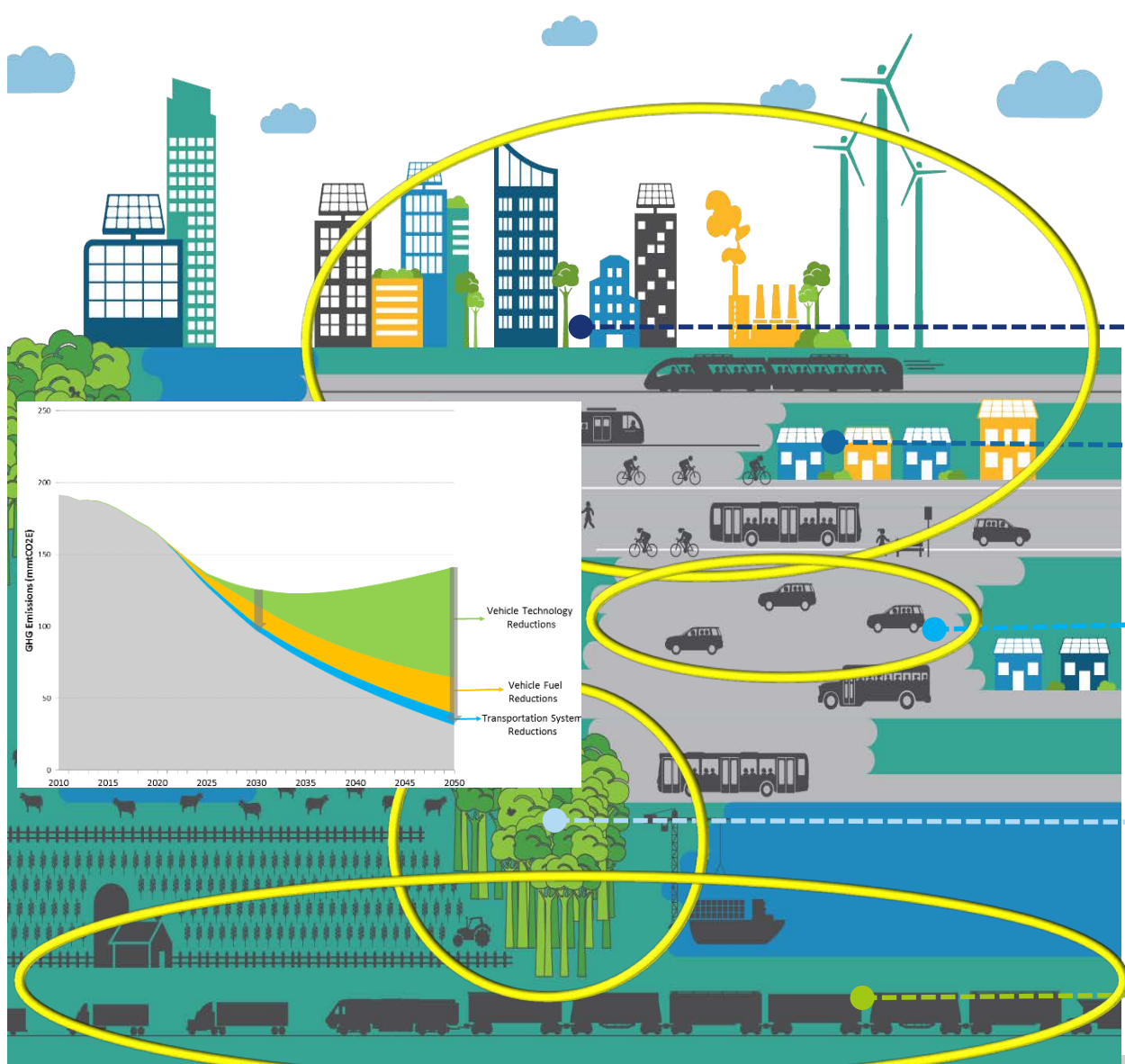
Double energy efficiency in existing buildings.

CLEAN CARS, TRANSIT & FREIGHT

- 5 million ZEVs & PHEVs
- 100% new buses ZEV
- Transition freight to zero-emission everywhere feasible



California's 2030 Vision



High density transit-oriented housing

Walkable and bikeable communities

REDUCE PER CAPITA VMT
25% from 2005 levels
- 1.6 miles/person/day

NATURAL & WORKING
LANDS RESTORATION
15-20 MMT CO2 reductions

Efficient freight system



Reducing VMT is necessary, and solves
problems electric vehicles and clean
fuels cannot



Key Takeaway: Greater Alignment Needed



- Align programs & investments to achieve positive transportation, climate, air quality, and equity outcomes
- More needs to be done to reduce VMT and provide reliable transportation options for everyone
- Coordinate freight and passenger vehicle infrastructure investments with ZEV priorities and incentives