

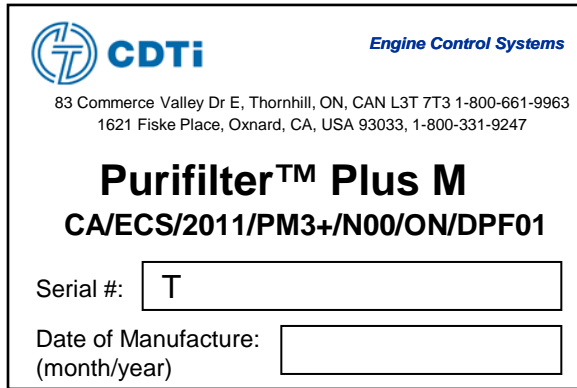
California Verification Labels For Purifilter Plus M

Top Level Product Label and Engine Label

VERIFIED APPLICATIONS

Engine Label

(foil / plastic composite)



CDTi Engine Control Systems
 83 Commerce Valley Dr E, Thornhill, ON, CAN L3T 7T3 1-800-661-9963
 1621 Fiske Place, Oxnard, CA, USA 93033, 1-800-331-9247

Purifilter™ Plus M
CA/ECS/2011/PM3+/N00/ON/DPF01

Serial #:

Date of Manufacture:

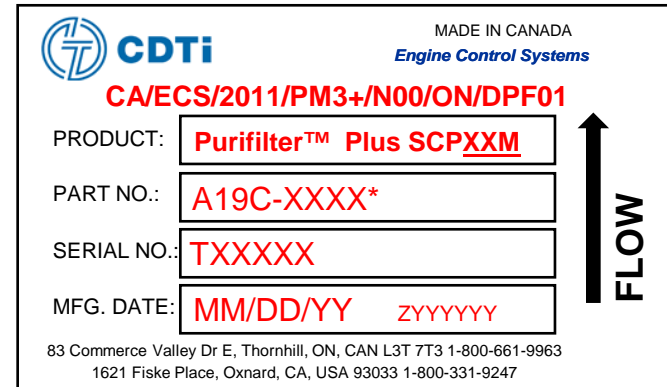
(month/year)

Window
 area

Notes on Engine Label

- Serial Number and Date of Mfr will be under adhesive window allowing installer to transfer information from product label- instructions will be provided in product manual

Label - Top Level Product Label on DPF (stainless steel)



CDTi Engine Control Systems MADE IN CANADA
CA/ECS/2011/PM3+/N00/ON/DPF01

PRODUCT:

PART NO.:

SERIAL NO.:

MFG. DATE:

83 Commerce Valley Dr E, Thornhill, ON, CAN L3T 7T3 1-800-661-9963
 1621 Fiske Place, Oxnard, CA, USA 93033 1-800-331-9247

FLOW

*Notes on Product Label

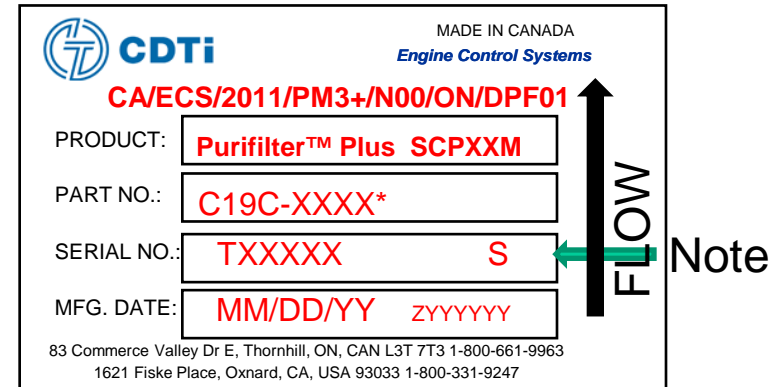
- Product SCPXXM; XX = Purifilter Plus M Model
- Part Number*: If sold as a complete system, the Part Number begins with an A19C pre-fix. XXXX= numerals from 0 thru 9.
- Serial Number Pre-fix "T" on all A19C system or C19C spare filters will denote ARB warranted product if returned under warranty claim to CDTi. XXXXX= numerals from 1 thru 9
- Serial Number Pre-fix will also denote which Verification Order was applicable to product
- Serial Number also links to Date of Mfr in CDTi internal records
- ZYYYYYY represents filter lot code format and will vary in length

California Verification Labels For Purifilter Plus M

VERIFIED HWY APPLICATIONS
Spare Filters

Engine Label
(foil / plastic composite)
- Not Applicable

Label - Top Level Product
Label on DPF
(stainless steel)



*Notes on Product Label

- Product SCPXXM ; XX = Purifilter Plus Model / Filter Size
- Part Number*: If sold as a spare centerbody, it would have a C19C pre-fix in the part number. XXXX= numerals from 0 thru 9.
- Serial Number Pre-fix "T" on all A19C system or C19C spare or replacement filters will denote ARB warranted product if returned under warranty claim to CDTi. XXXXX= numerals from 1 thru 9
- **NOTE: S represents a spare appears only if applicable**
- Serial Number Pre-fix will also denote which Verification Order was applicable to product
- Serial Number also links to Date of Mfr in CDTi internal records
- ZYYYYYY represents filter lot code and will vary in length

Notes on Engine Label

- Not applicable for spare filters as they are used on multiple vehicles for short periods of time

California Verification Labels For Purifilter Plus M

VERIFIED HWY APPLICATIONS
Warranty Replacement
Filter & Engine Labels

Label - Top Level Product
 Label on DPF
 (stainless steel)

Engine Label (foil / plastic composite)

CDTi Engine Control Systems
 MADE IN CANADA
CA/ECS/2011/PM3+/N00/ON/DPF01
 PRODUCT: **Purifilter™ Plus SCPXXM**
 PART NO.: **C19C-XXXX***
 SERIAL NO.: **TXXXXX WR1**
 MFG. DATE: **MM/DD/YY ZYYYYYY**
 83 Commerce Valley Dr E, Thornhill, ON, CAN L3T 7T3 1-800-661-9963
 1621 Fiske Place, Oxnard, CA, USA 93033 1-800-331-9247

CDTi Engine Control Systems
 83 Commerce Valley Dr E, Thornhill, ON, CAN L3T 7T3 1-800-661-9963
 1621 Fiske Place, Oxnard, CA, USA 93033, 1-800-331-9247
Purifilter™ Plus M
CA/ECS/2011/PM3+/N00/ON/DPF01
 Serial #: **T**
 Date of Manufacture: (month/year)
 REPLACEMENT / RE-DESIGNATION*

Window
 area

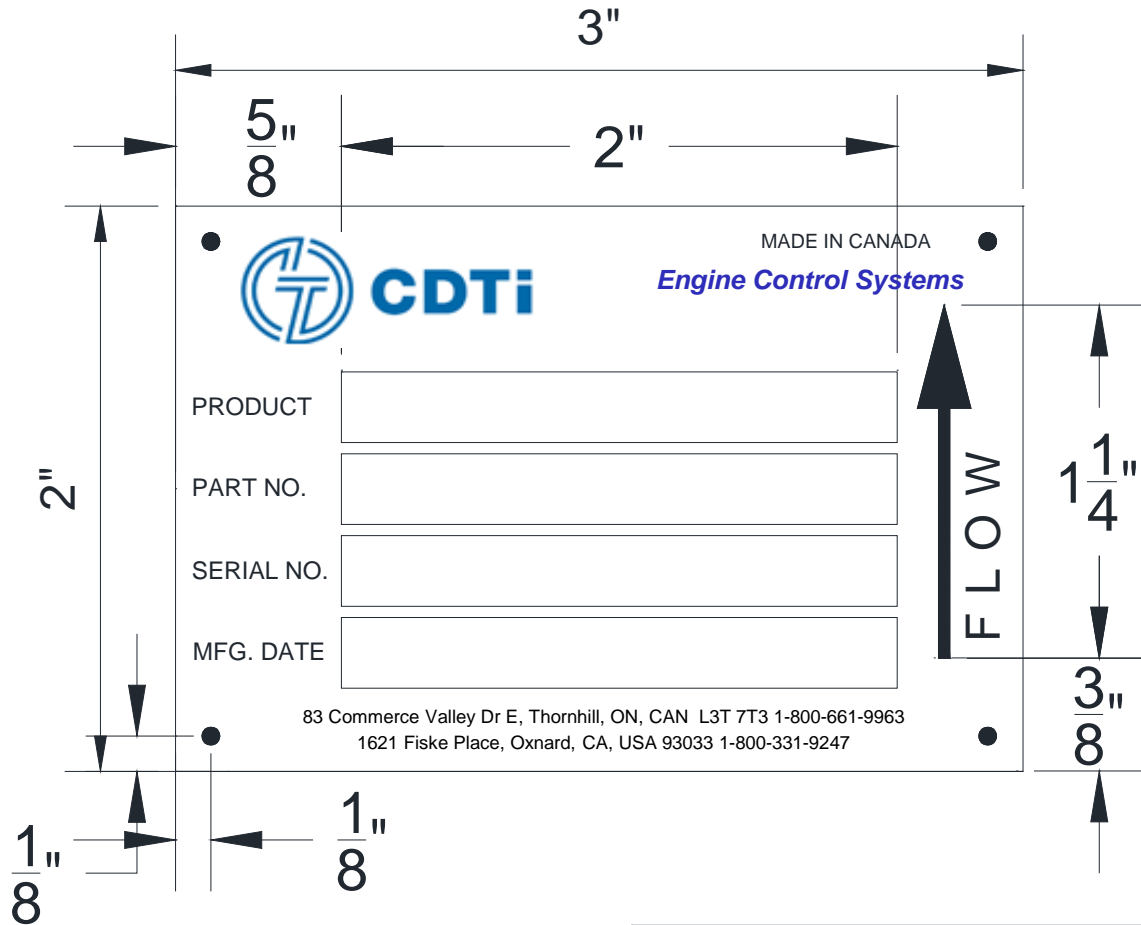
Notes on Engine Label

- Serial Number and Date of Mfr will be under adhesive window allowing installer to transfer information from product label- instructions will be provided in product manual
- REPLACEMENT / RE-DESIGNATION appears at bottom of label if applicable (REPLACEMENT = replacement label)

*Notes on Product Label

- Product SCPXXM; XX = Purifilter Plus M Model / Filter Size
- Part Number*: If sold as a spare centerbody, it would have a C19C pre-fix in the part number. XXXX= numeral from 0 thru 9.
- Serial Number Pre-fix “T” on all A19C system or C19C spare or replacement filters will denote ARB warranted product if returned under warranty claim to CDTi. XXXXX= numerals from 1 thru 9
- **NOTE: WR1 represents a filter replaced under warranty- appears only if applicable**
- Serial Number Pre-fix will also denote which Verification Order was applicable to product
- Serial Number also links to Date of Mfr in CDTi internal records
- ZYYYYYY represents filter lot code and will vary in length

**Labels for CDTi (Engine Control Systems) Purifilter Plus M System
 Relating to Executive Order Series DE-11-005
 Effective Date: December 16, 2013**



ENGINE CONTROL SYSTEM				
<small>THIS DRAWING CONTAINS CONFIDENTIAL INFORMATION AND IS THE EXCLUSIVE PROPERTY OF ENGINE CONTROL SYSTEMS LTD (ECS). NEITHER THE DOCUMENT NOR ITS CONTENTS ARE TO BE DISCLOSED TO A THIRD PARTY IN ANY WAY WITHOUT PRIOR WRITTEN PERMISSION OF ECS.</small>	CHK'D	APPR'D	PART DESCRIPTION	
	CUSTOMER DWG NO.	REV.	ECS DOC/DPF PRODUCT LABEL	
	ORIGINAL MUFFLER NO.		SCALE:	DRAWN: M. RIAHI
	JIG NO.		DATE: 31-MAY-12	MATERIAL:
	TOLERANCE (UNLESS OTHERWISE STATED)		SHEET: 1 of 1	REV. C
<small>FRACTIONAL ± 1/32 ANGLES ± DECIMAL .XX ± .XXX ± .010</small>			PART NO. J26-0059	

Confidential Business Information

Labels for CDTi (Engine Control Systems) Purifier Plus M System
Relating to Executive Order Series DE-11-005
Effective Date: December 16, 2013

CDTi BPM Labeling



Standard Alarm Settings

Yellow: 150 mbars

Red: 200 mbars



Alternate Alarm Settings

Yellow: 180 mbars

Red: 225 mbars

Note: Yellow Dot on BPM module faceplate indicates alternate settings defined above used