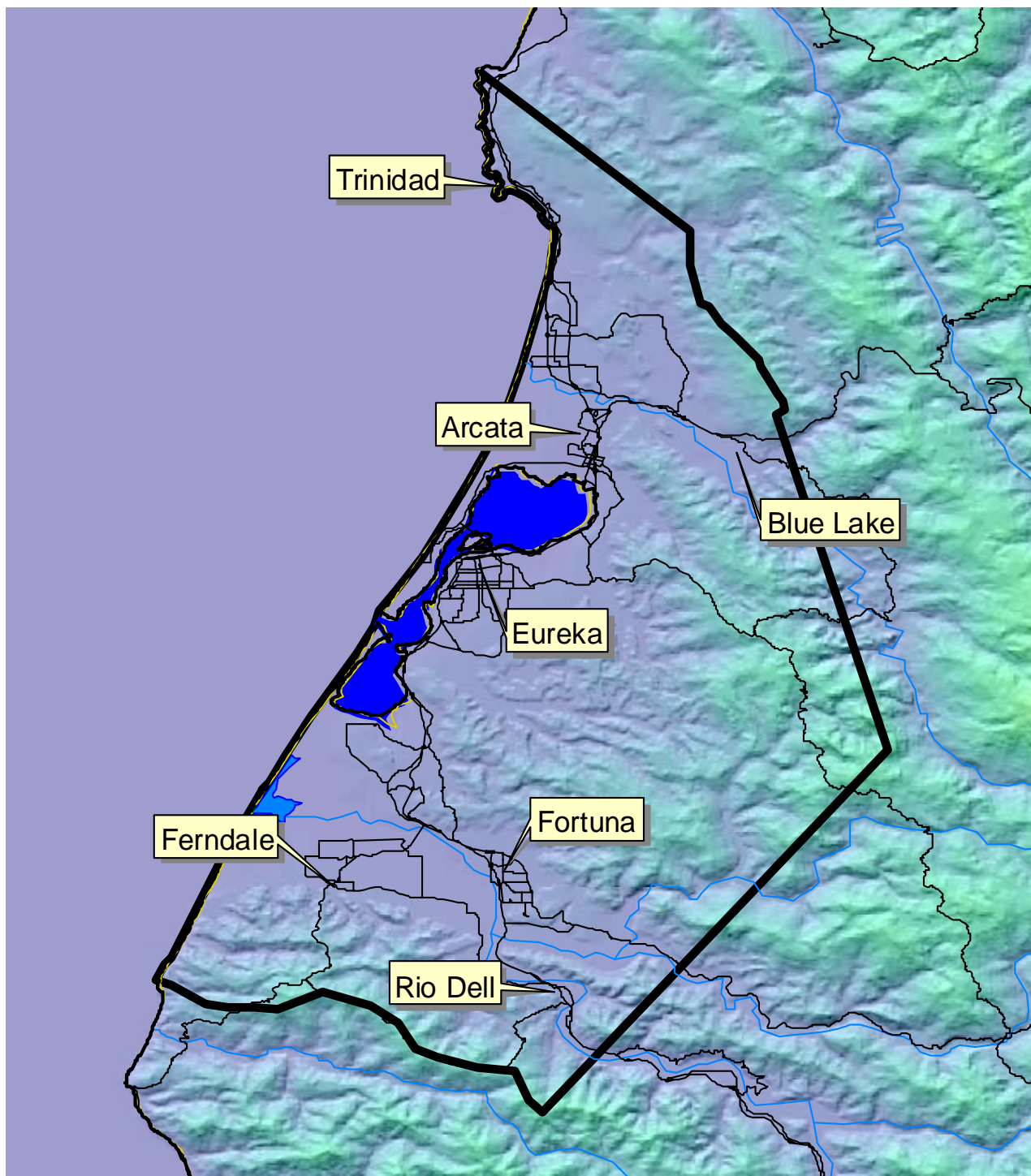


**APPENDIX C
HUMBOLDT AIR BASIN**

Table of Contents

HUMBOLDT AIR BASIN

Humboldt Bay Air Basin



-  Major Roads
-  Humboldt Bay Air Basin



For use in these Rules and Regulations the Humboldt Bay Air Basin shall be defined as all those portions of Humboldt County: bounded on the west by the Pacific Ocean; bounded on the north and east by a line extending from Rocky Point, six miles north of Trinidad, to the junction of Little River and the Lower South Fork of Little River; thence due south to Tip Top Ridge; thence southeasterly along Tip Top Ridge to the southernmost summit of Tip Top Ridge north of Korb, thence southeasterly along a line extending from the southernmost point of Tip Top Ridge to a lookout station at Iaqua Buttes; bounded on the south and east by a straight line extending from the lookout station at Iaqua Buttes to the Mt. Pierce lookout station south of Scotia; bounded on the south by a line following along the crest of the Bear River Ridge from the Mt. Pierce lookout station to the Pacific Ocean.