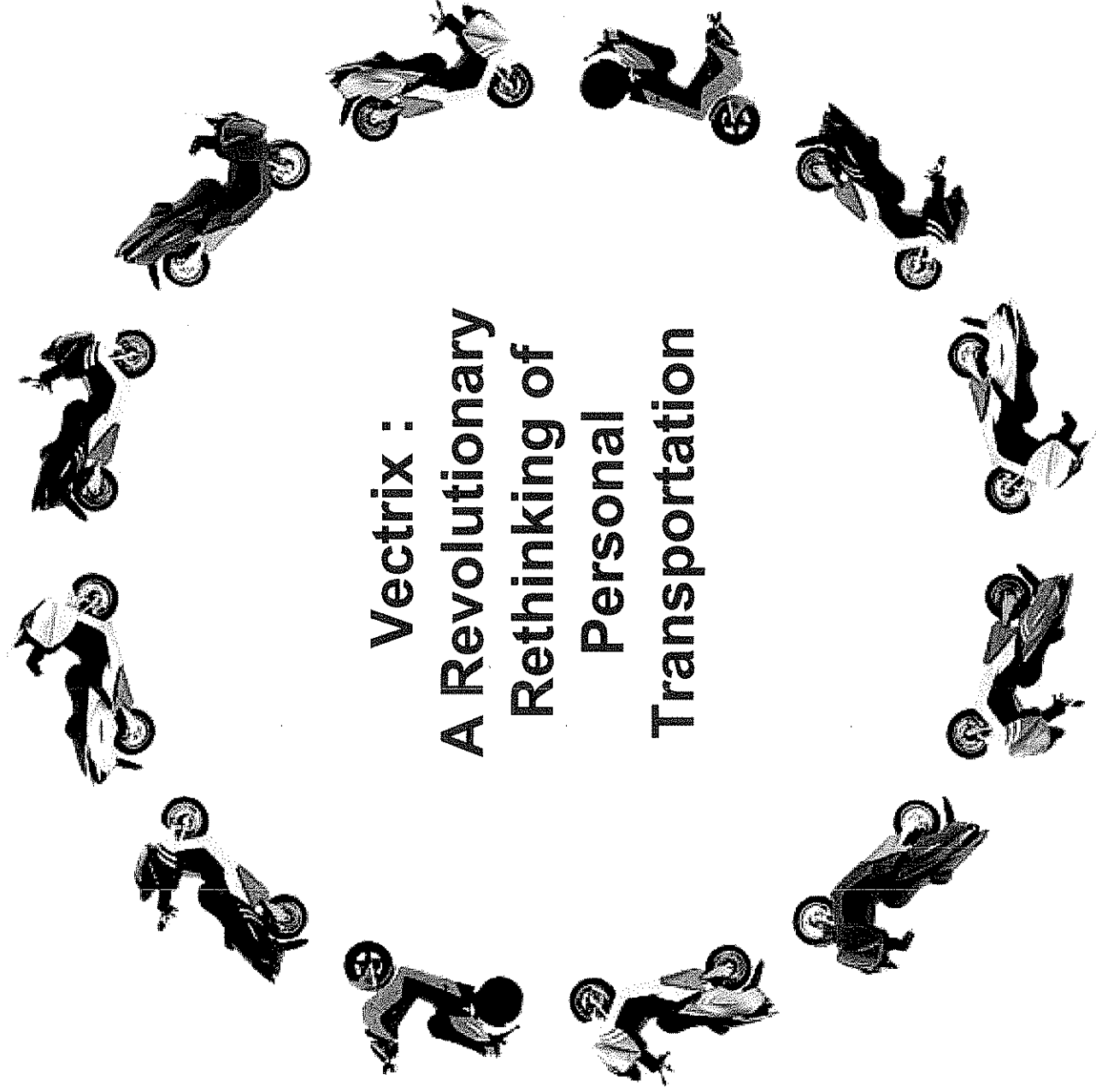


Colleen Quinn

09-4-7



Presentation to the California Air Resources Board - 2/26/09

- Vectrix created a full line of totally electric, zero emission vehicles
- Company founded in 1996 in Middletown, RI
- New Bedford, Massachusetts facility is design, R&D and assembly plant
- Positioned initially in the premium large class of 250-500cc motorcycle market
- Homologated in 2007
- Vectrix is the first zero emission, high performance, street legal, mass produced international consumer electric vehicle
- Vectrix technology is the latest, most advanced technology
- Aircraft aluminum space frames
- Proprietary motor and transmission designs

**The Vectrix VX-1:
The powerful, all-highway-capable
Personal Electric Vehicle**

- Energy cost: About 1 cent a mile
- Range: 35-55 miles (depending on speed, rider weight and driving habits)
- Top speed: 62 mph
- Pollution: Zero
- Carbon Emissions: Zero
- Noise: Nearly Silent

**Strong, Lightweight
Aluminum Space Frame**

**Brembo Disc Brakes,
Front and Rear**

**Marzocchi 35mm
Telescopic Fork**

**Speed, Range
and Battery Charge
Readouts**

**NIMH Battery Pack:
37 Kilowatt-hours Capacity**

**Multi-Function Throttle:
Controls Speed, Regenerative
Braking, and Reverse**

**Seating: 1.6 Cubic Feet
(1 Full-Speed Helmets)
Optional Top Case
Up to 1.7 Cubic Feet**

**Charging any 110-volt
outlet. Charging Time:
2.5 Hours (to 80%)**

**Rear-Wheel-Mounted
Planetary Gear Drive**

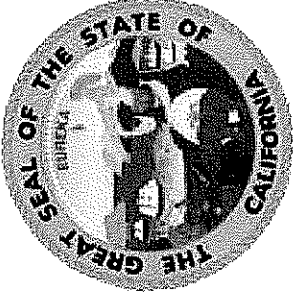
Sachs Dual Rear Shocks

**28.2 horsepower Brushless
Radial Air-Cap DC Motor**

GOOD. CLEAN. FUN!

**VECTRIX
VEHICLES**

Saving the world. It's going to be a lot more fun than we thought.



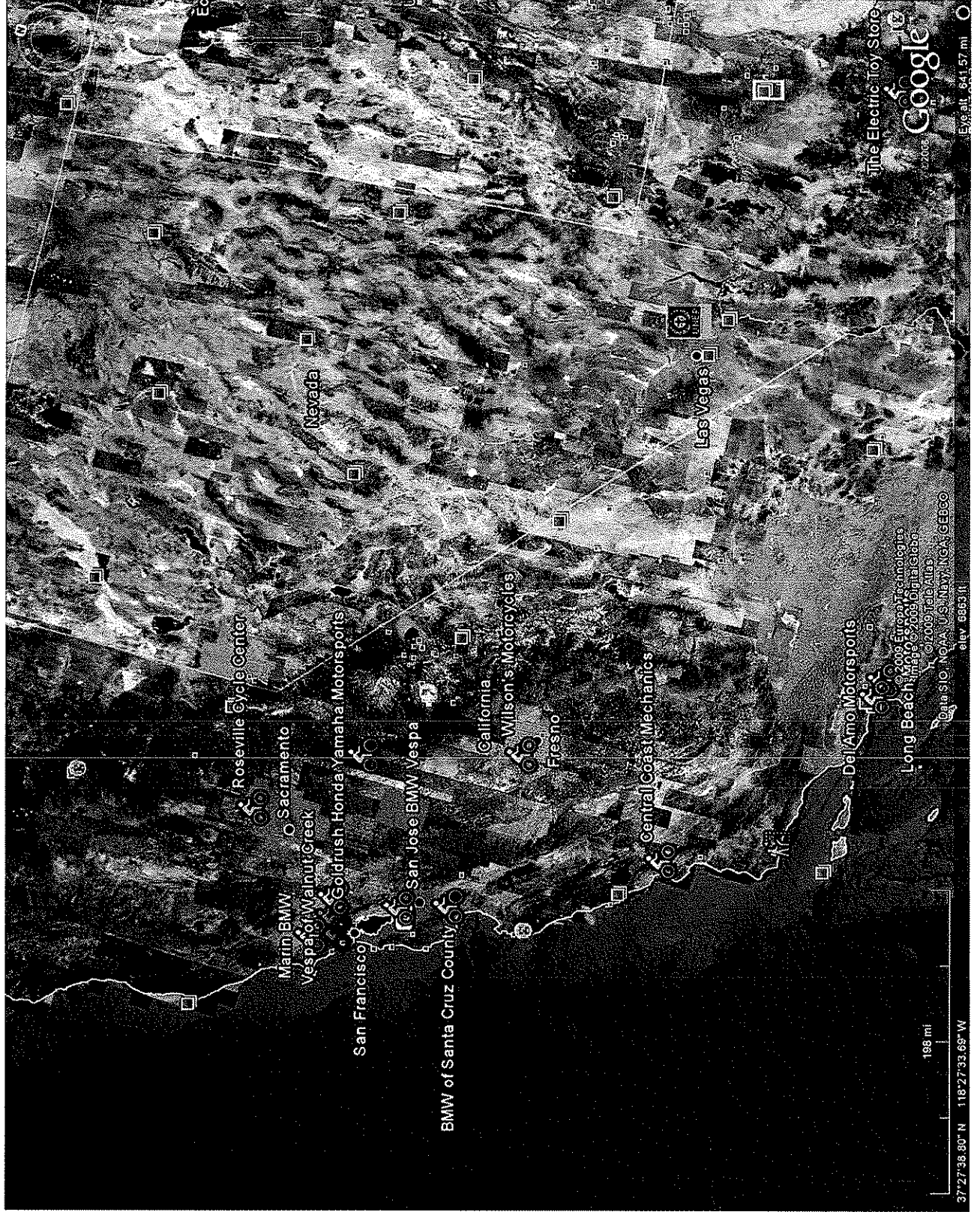
The rebate has been effective in its mission to encourage consumers to use zero emission vehicles for transportation

Data on Expected Results from Incentives:

State of CA offers \$1,500 rebate

- Sales in the state of CA Vs. US wide is: 25.31% of overall US Vectrix Sales
- Population of CA Vs. US is: 12%, bike sales in CA Vs US total is 14%+ (Census Data 2006 and MIC, 2005)
- Takeaway: Incentives play an important role in purchases of EVs. At the \$1,500 level (15% of cost of bike), demand for electric 2 wheeler may double
- Based on the below cost comparisons to comparable internal combustion models, the % difference is 60% +. In 2008, this was in the 50%+ range
- The CA rebate narrowed it down to 33%, in 2009, a \$2000+ rebate should provide an equivalent impact to incentivize EV bike sales

VECTRIX CONTRIBUTES JOBS IN CALIFORNIA



Vectrix has
eleven
dealers—
supporting
220 jobs

Motor
Controller
Components
Manufacturer,
Parker
Hannifin
Located in
Santa Rosa

California Consumer Usage of the Vectrix

Customer location	VMT	Usage	Comment
Berkeley	1,500	Commutes from Berkeley to SF every day, weather permitting	
San Diego	3,000	Commutes to work in San Diego every day weather permitting	"Because of Vectrix, owner installed solar panels on roof. Charges for free, has gotten credit from electric company
Santa Monica	1,000	Commutes to work in Downtown LA most days	
Del Mar	1,700	Commutes from Del Mar to San Diego	"No Parking issues"
San Jose	6,000	Commutes to work on daily basis, 58 miles round trip	
San Francisco	5,000	Commutes to work daily weather permitting, 5 miles	
San Francisco	5,000	Commutes to work daily	Never use a car" "Employer installed a plug on outdoor light pole so I can charge at work."
San Francisco	2,000	Retired, but rides as much as he can around town	"Recharges from solar panels"
San Francisco	6,000	Commutes to work	"Main daily vehicle...use car only once every two weeks... has transformed my transportation

SUMMARY:

- Electric motorcycles are an integral part of the Green Technology Economy & provide jobs in California
- The Vectrix is the first electric two wheel vehicle in production, and the rebate program in California contributed significantly to the seeding of a national consumer market for the vehicle
- User data of the vehicle demonstrates significant miles on the road and consumer receptivity to the technology
- The CARB rebate program worked and achieved its mission in the pilot year
 - The New Program authorized by AB 118 must include motorcycles

