

WHAT DOES  
*ENVIRONMENTAL RACISM*  
LOOK LIKE?

¿Como se mira el *Racismo Ambiental*?



<https://sac-ejc.org/>

# SacEJC Public Comments

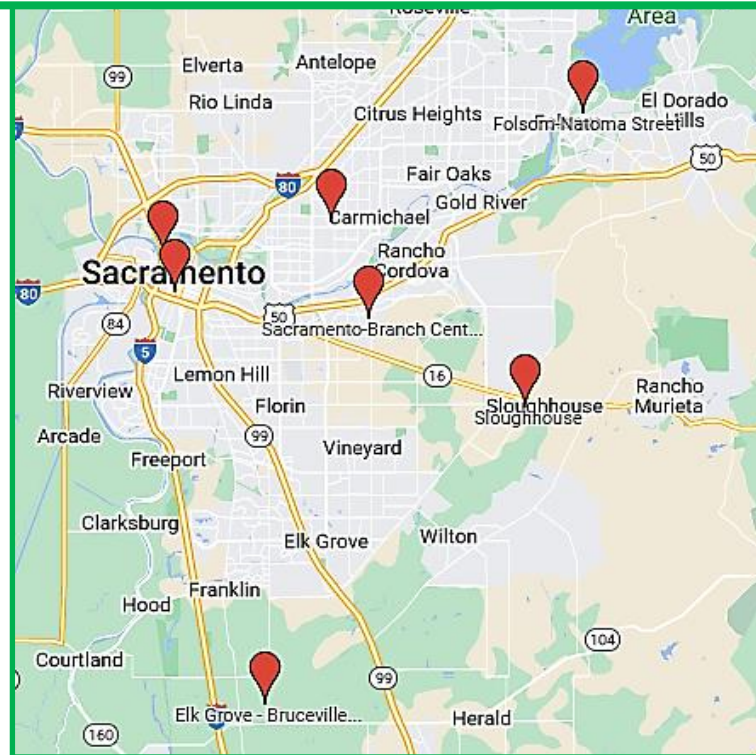
## **Agenda Item**

*23-9-4: Public Meeting to Consider the AB 617 Community Air Protection Program Statewide Strategy Update (Blueprint 2.0) and to Hear an Informational Update on the Community Air Protection Incentives Guidelines*

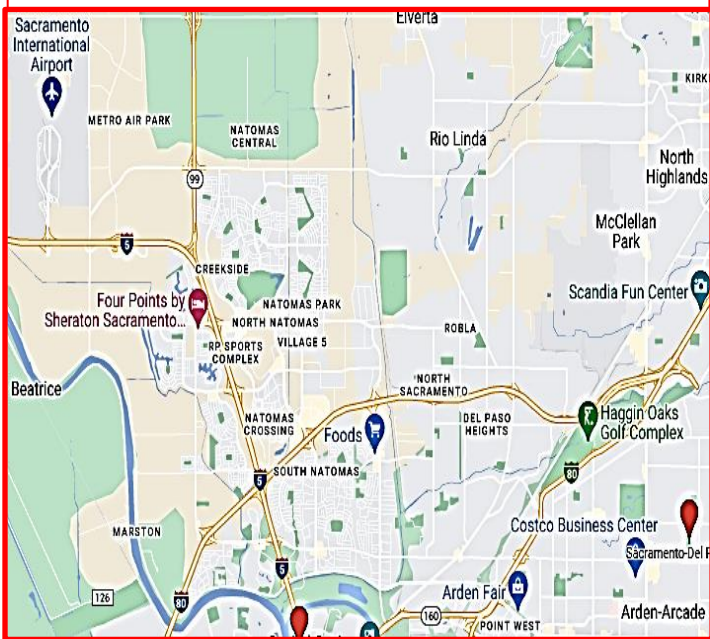
My Name is Herman Barahona and on behalf of the **Sacramento Environmental Justice Coalition, I want to submit these comments that may help improve the Blueprint's final steps and perhaps what is left of the AB617 project in Sacramento.** AB617 in South Sacramento was a major disappointment due to following issues:

1. Lack of transparency and commitment to the law. AB617 is intended to address non-mobile pollutions sources. The local AB617 committee and Sacramento AQMD deliberately avoided major areas of concern to local BIPOC and low-income communities by creating boundaries and geographic restrictions that excluded high impacted areas and persons of color interested in joining the effort (See file and EJ Maps).
2. \$23 Million has been spent with AB617 in South Sacramento, and it has had no impact on the most polluted neighborhoods intentionally excluded from the process.
3. We ask that CARB establish higher standards for local Air Quality Management Districts to have a robust, inclusive and broad based process to implement AB617 according to the law.
4. The number of committee representatives on AB617 cannot be arbitrarily restrictive. The Sac-EJC.org is the largest EJ organization in Sacramento and after several attempts to join, BIPOC EJ leaders were not selected to be on the board.
5. There has to be an accounting of how the funds are used, and demand strong evidence that marginalized communities in EJ zones directly benefit significantly through transformative health outcomes and cleaner industry practices. Health Program Evaluators must be included in the process.

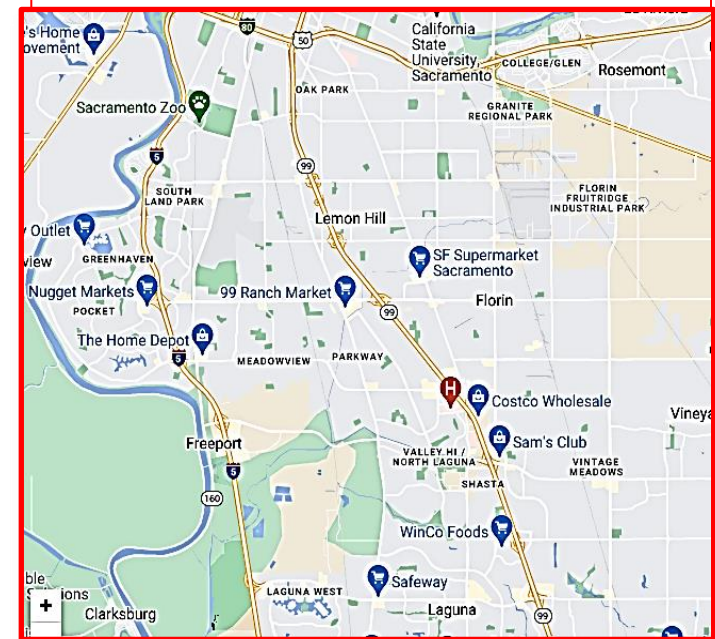
**Location of Sacramento's Regulatory Air Quality Monitors**  
*(only data admissible in courts)*  
**Ubicación de Monitores del Aire Reguladores/Federales**  
*(Datos que se admiten en las cortes)*



There are No Regulatory Air Quality Monitors installed in **North Sacramento's poorest neighborhoods:**  
 North Highlands, Rio Linda, Robla, Del Paso Heights, South Natomas, Gardenland



There are No Regulatory Air Quality Monitors installed in **South Sacramento's poorest neighborhoods:**  
 Franklin/Fruitridge Corridors, Meadowview, Woodbine, Florin, Oak Park

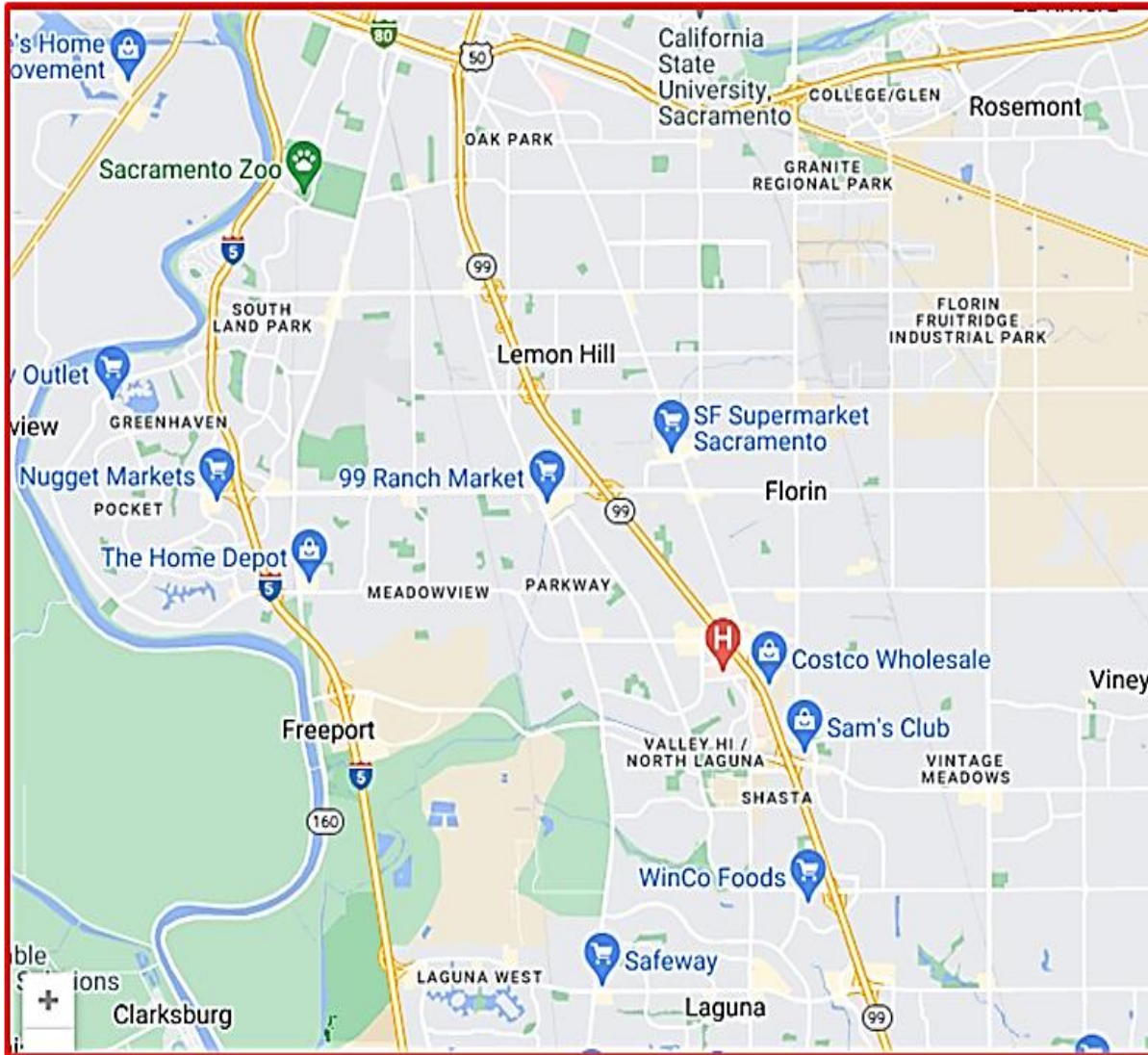


**No hay monitores de Aire Reguladores**  
**Ni en el Norte ni en el Sur de las**  
**comunidades**  
**mas pobres de Sacramento**



**AB617 is a law that was intended to reduce Non-Mobile Pollution Sources in poor/marginalized neighborhoods**

*La ley AB617 pasó para reducir la contaminación de contaminadores no-mobile /estructuras en comunidades pobres/marginadas en el Estado de California*



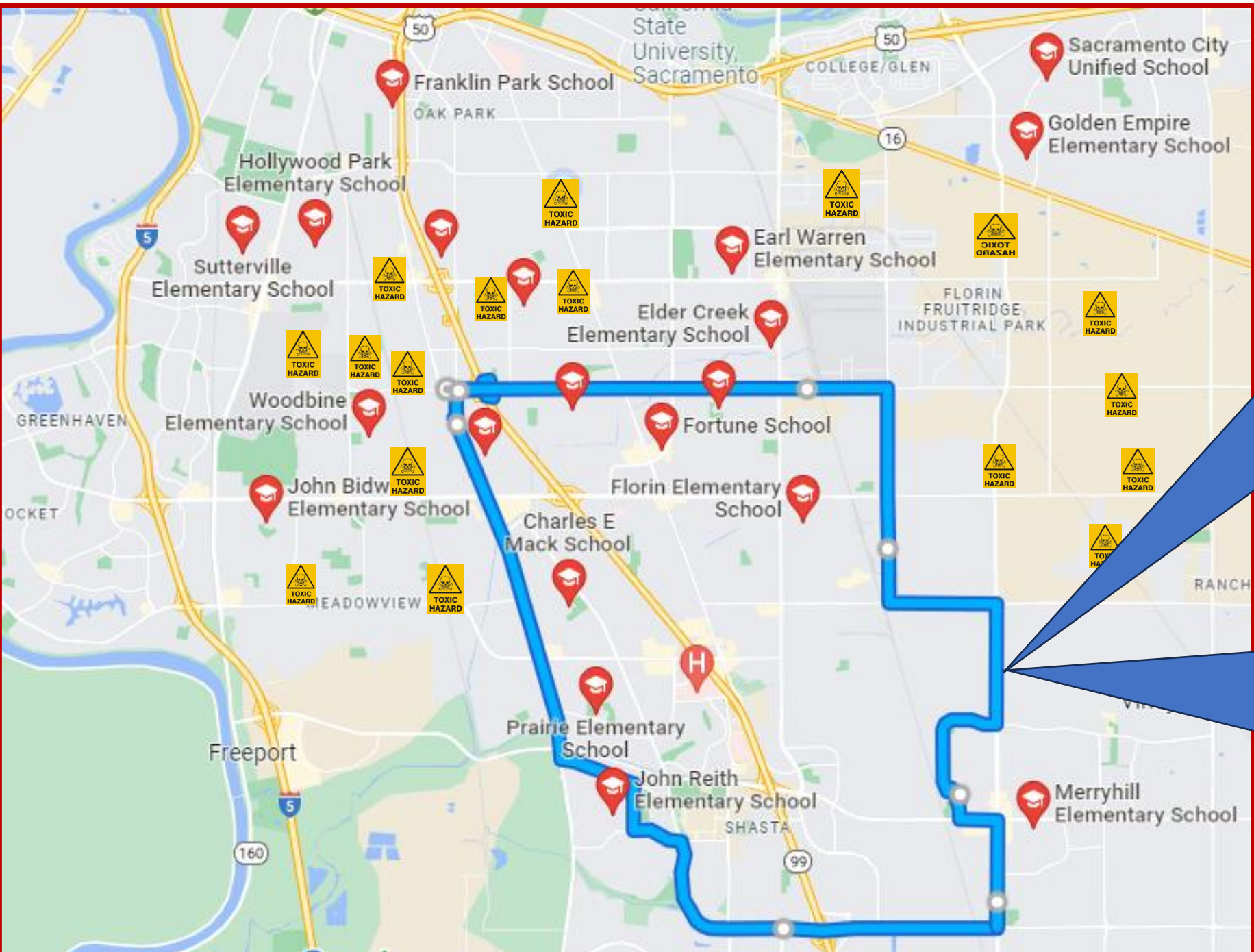
**The State awarded South Sacramento about \$30million in AB617 funds to reduce air pollution**  
(That was over 4 years ago, and \$23Million have been spent already)

*El Estado otorgó \$30 millones para el Sur de Sacramento con fondos de AB617 para reducir la contaminación en el aire. Eso fue hace 4 años, y \$23 millones se han usado.*

**Here are some examples of Non-Mobile polluters in South Sacramento:**

**Ejemplos de estructuras fijas/No-mobiles que contaminan en Sur Sacramento:**

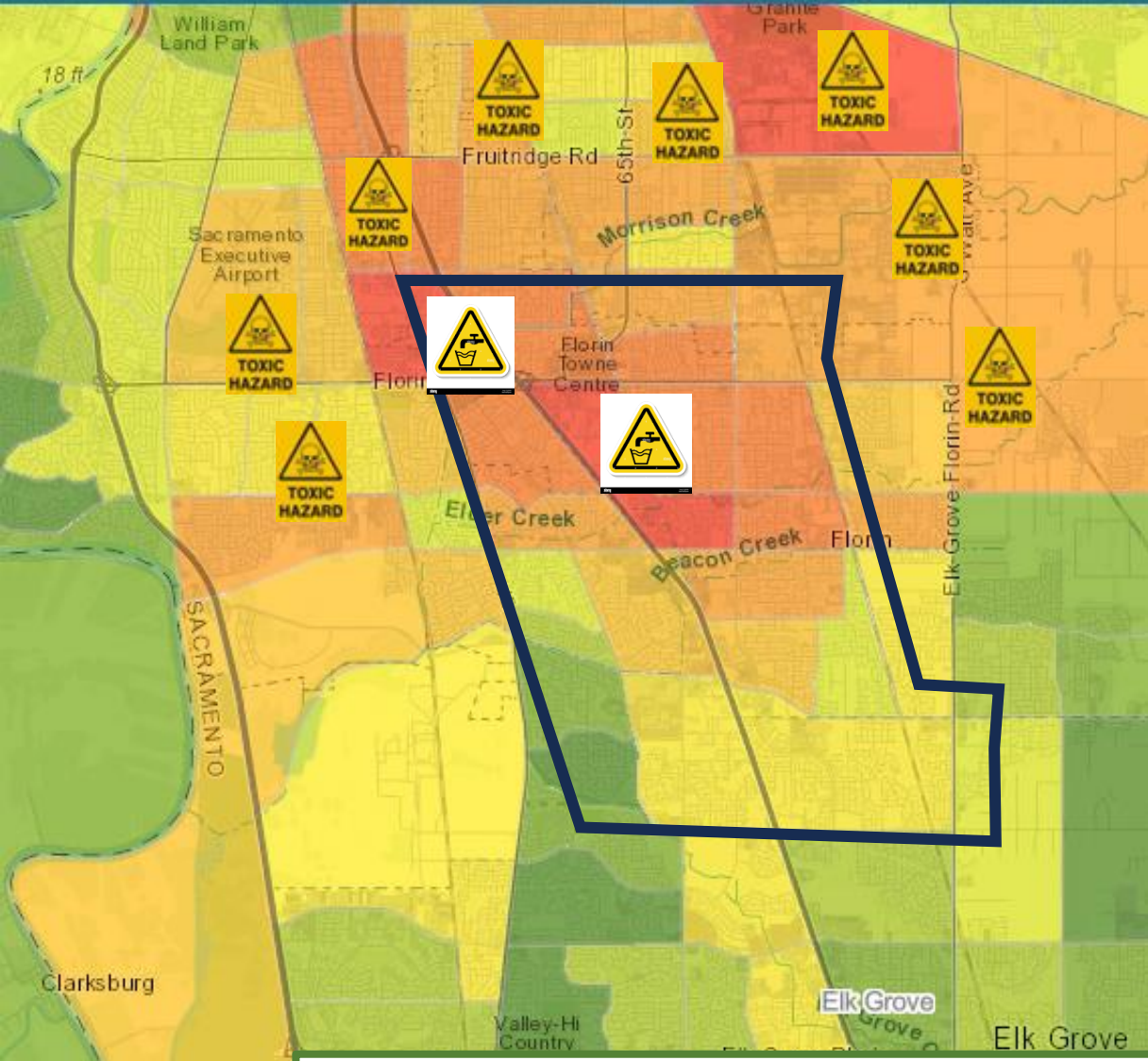
- **The Executive Airport Lead-Fuel station and airplanes**
- **The old Campbell Soup Station**
- **Waste Management Stations**
- **Industrial Sites**



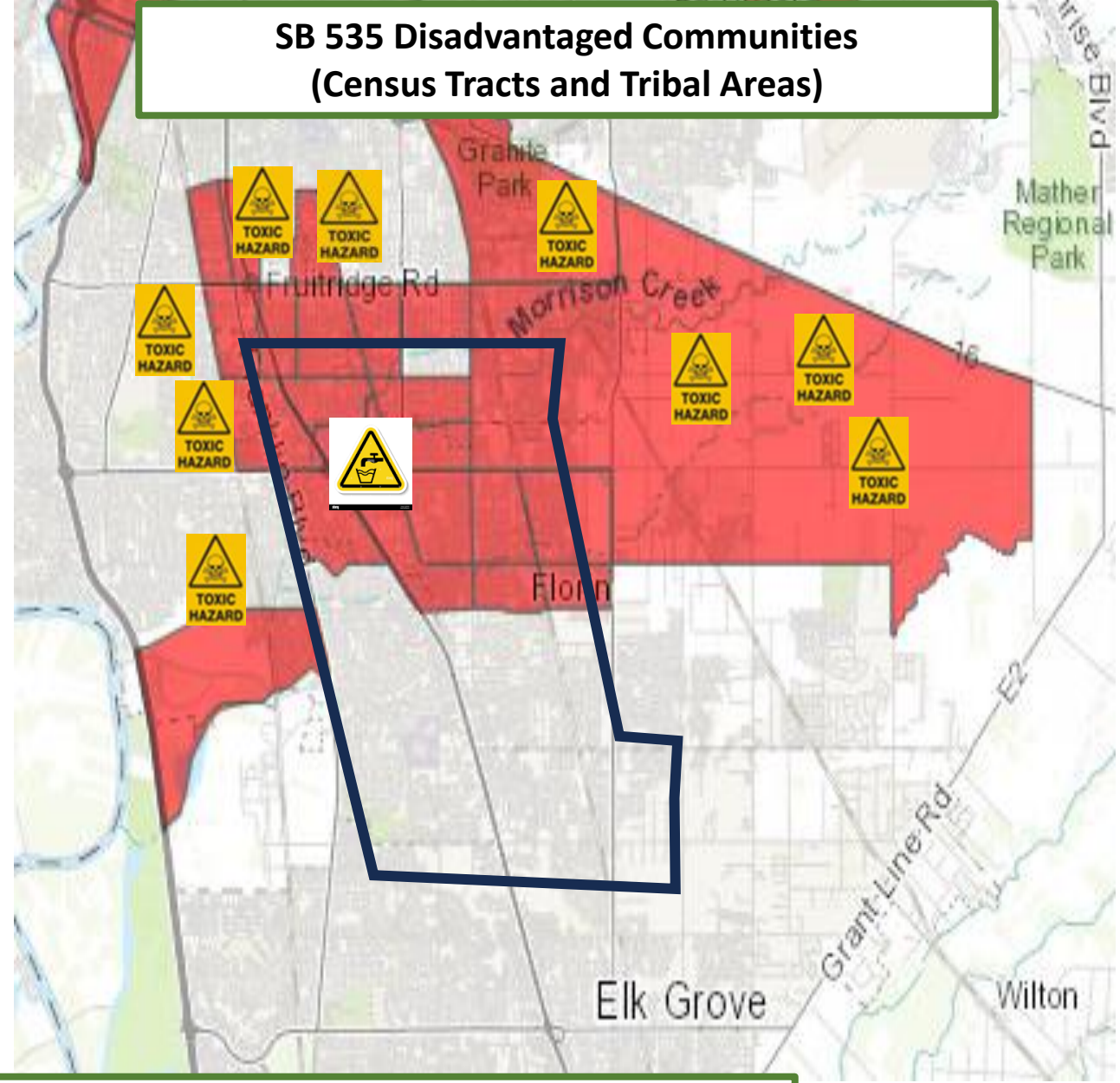
The AB617 Committee and the Sacramento Air Quality Management District (AQMD) decided to focus their work within these boundaries

El comité de AB617 y La Agencia a Cargo de la Calidad de Aire en Sacramento (AQMD) decidieron enfocarse solamente dentro de estas líneas/bordes





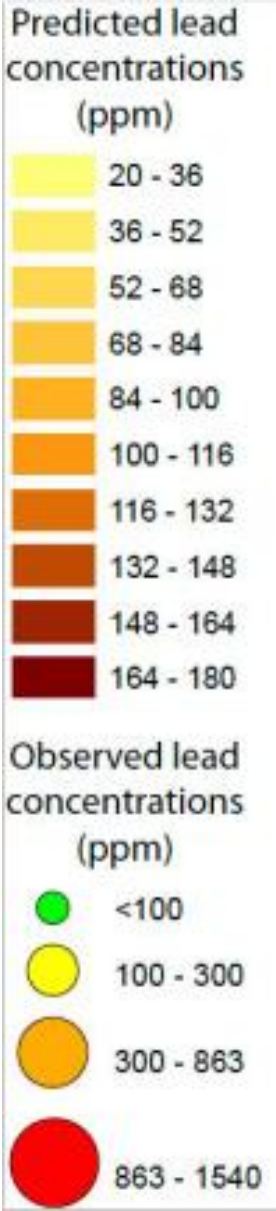
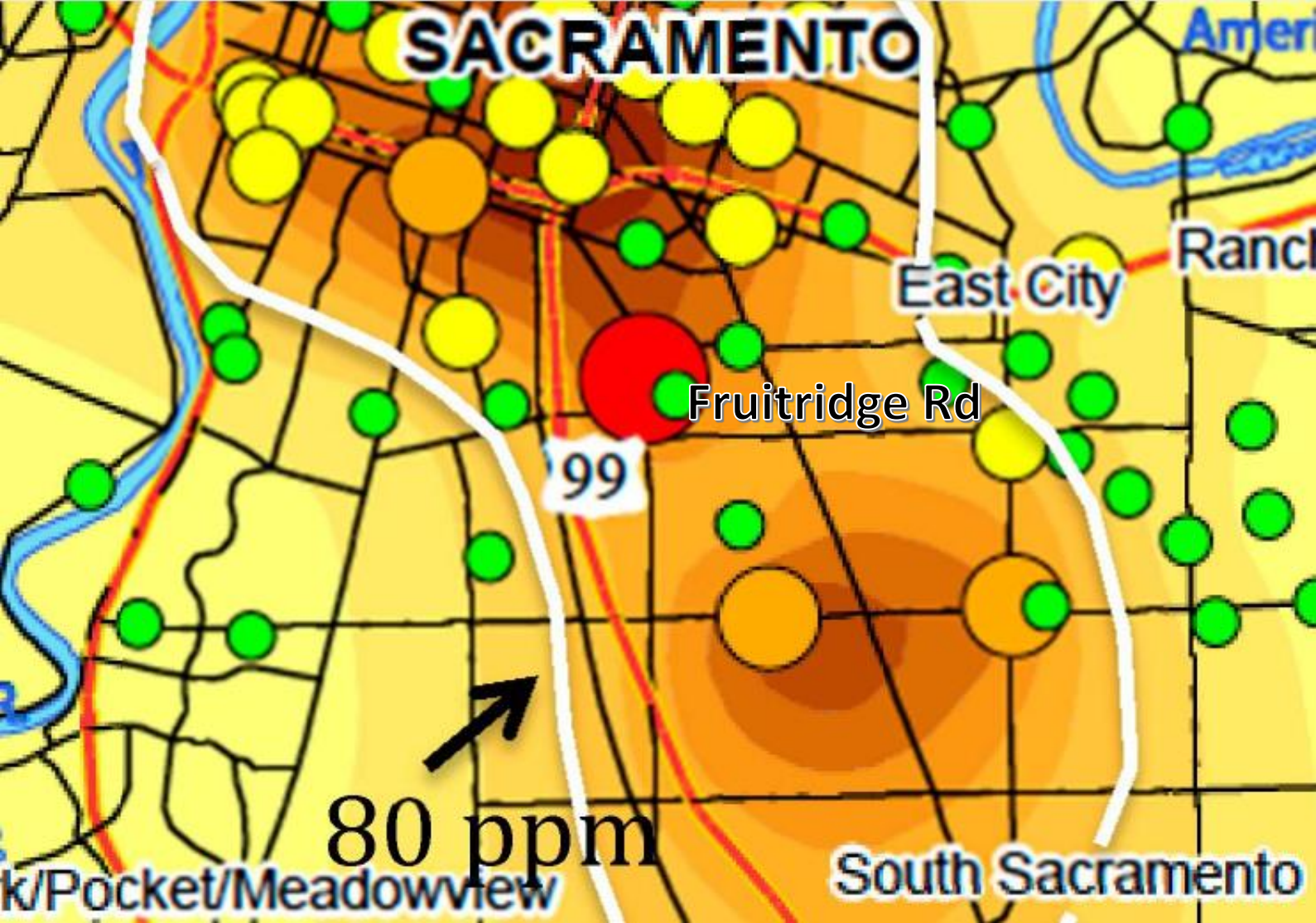
### SB 535 Disadvantaged Communities (Census Tracts and Tribal Areas)



**Cal-Enviro Screen (poorest and most disadvantaged are Red and Orange)**  
*Áreas mas marginadas con la población mas vulnerable en Rojo y Anaranjado*  
<https://oehha.ca.gov/calenviroscreen/report/calenviroscreen-40>



Lead concentrations according to the National Institute of Health (NIH)  
 Concentración de plomo de acuerdo al Instituto Nacional de Salud



<https://www.ncbi.nlm.nih.gov/pmc/articles/PMC4377958/>