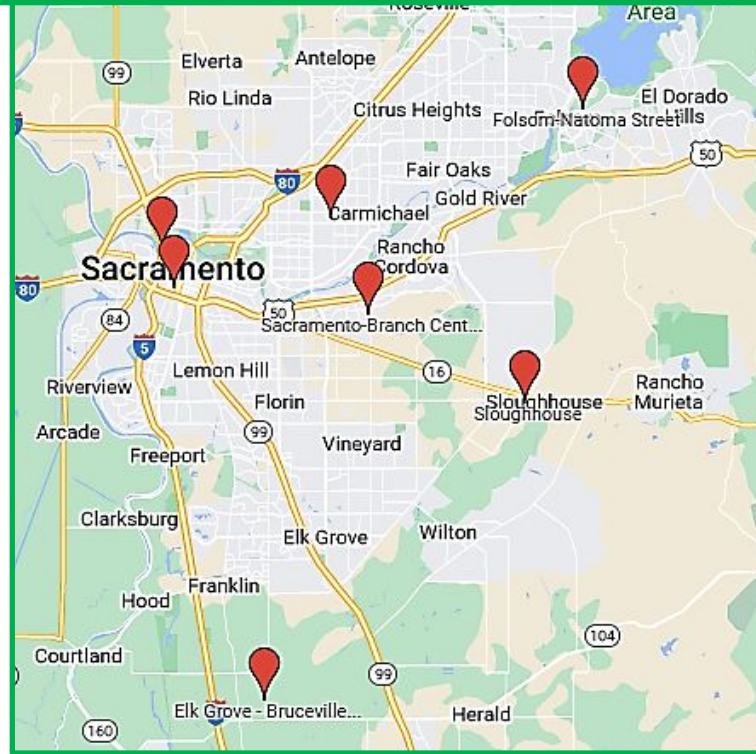
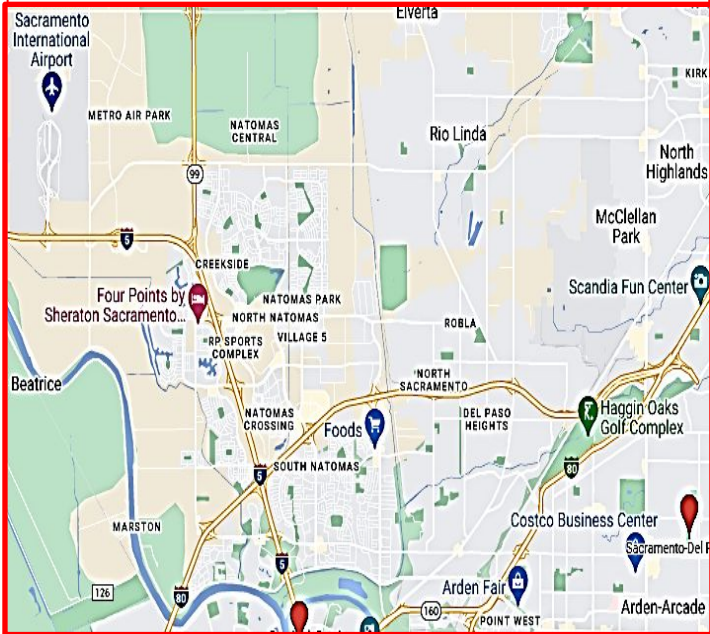


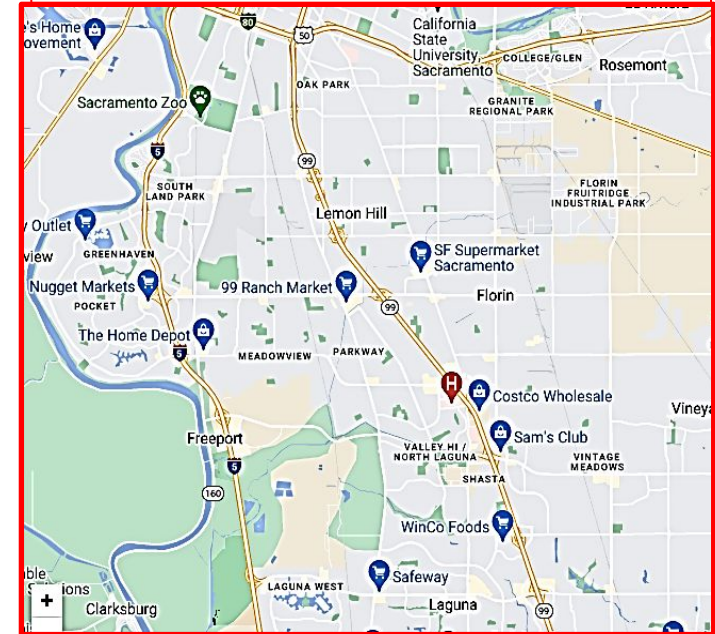
Location of Sacramento's Regulatory Air Quality Monitors
(only data admissible in courts)
Ubicación de Monitores del Aire Regadores/Federales
(Datos que se admiten en las cortes)



There are No Regulatory Air Quality Monitors installed in **North Sacramento's poorest neighborhoods:**
 North Highlands, Rio Linda, Robla, Del Paso Heights, South Natomas, Gardenland



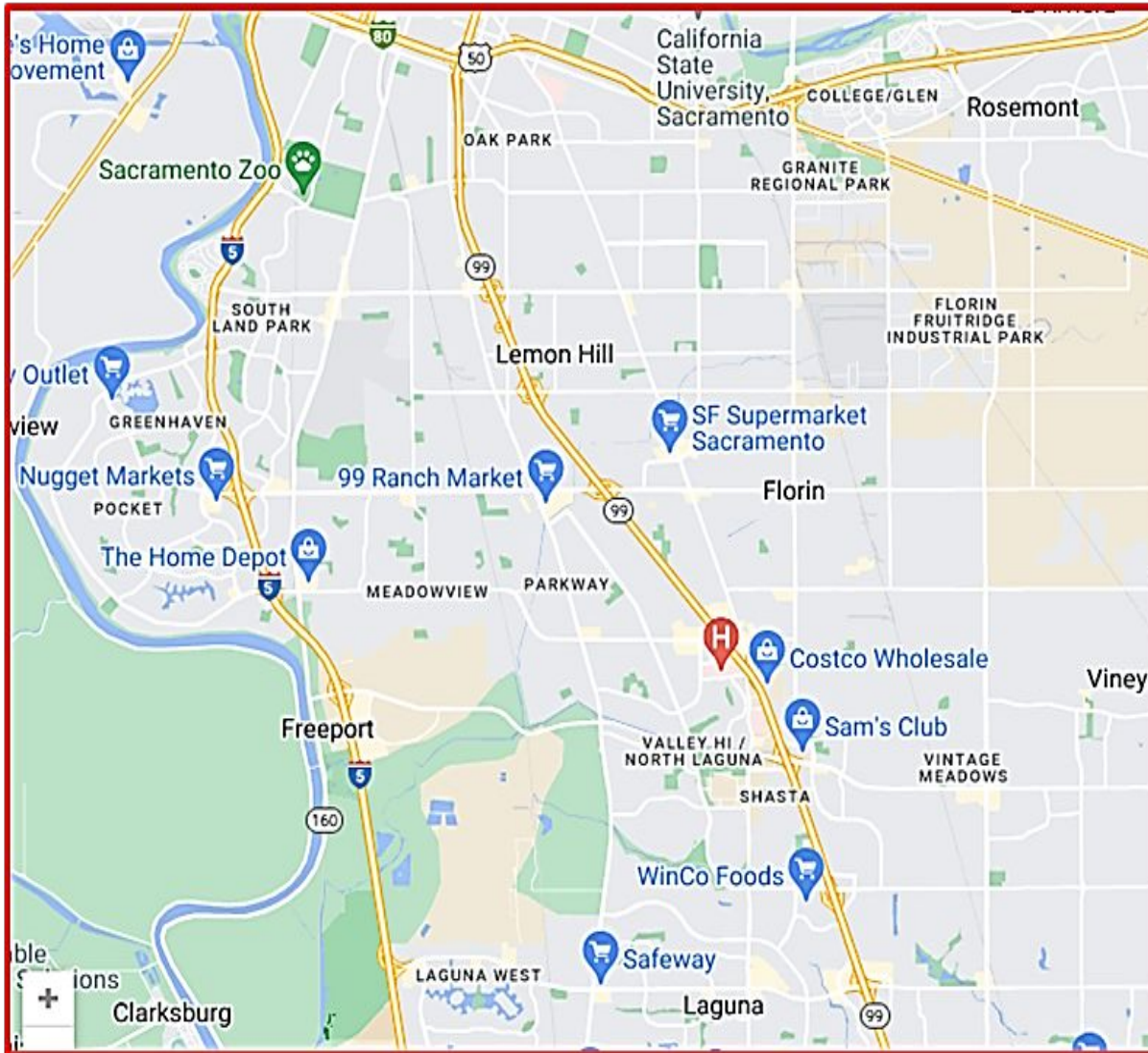
There are No Regulatory Air Quality Monitors installed in **South Sacramento's poorest neighborhoods:**
 Franklin/Fruitridge Corridors, Meadowview, Woodbine, Florin, Oak Park



No hay monitores de Aire Regadores
Ni en el Norte ni en el Sur de las
comunidades
mas pobres de Sacramento

AB617 is a law that was intended to reduce Non-Mobile Pollution Sources in poor/marginalized neighborhoods

La ley AB617 pasó para reducir la contaminación de contaminadores no-mobile /estructuras en comunidades pobres/marginadas en el Estado de California



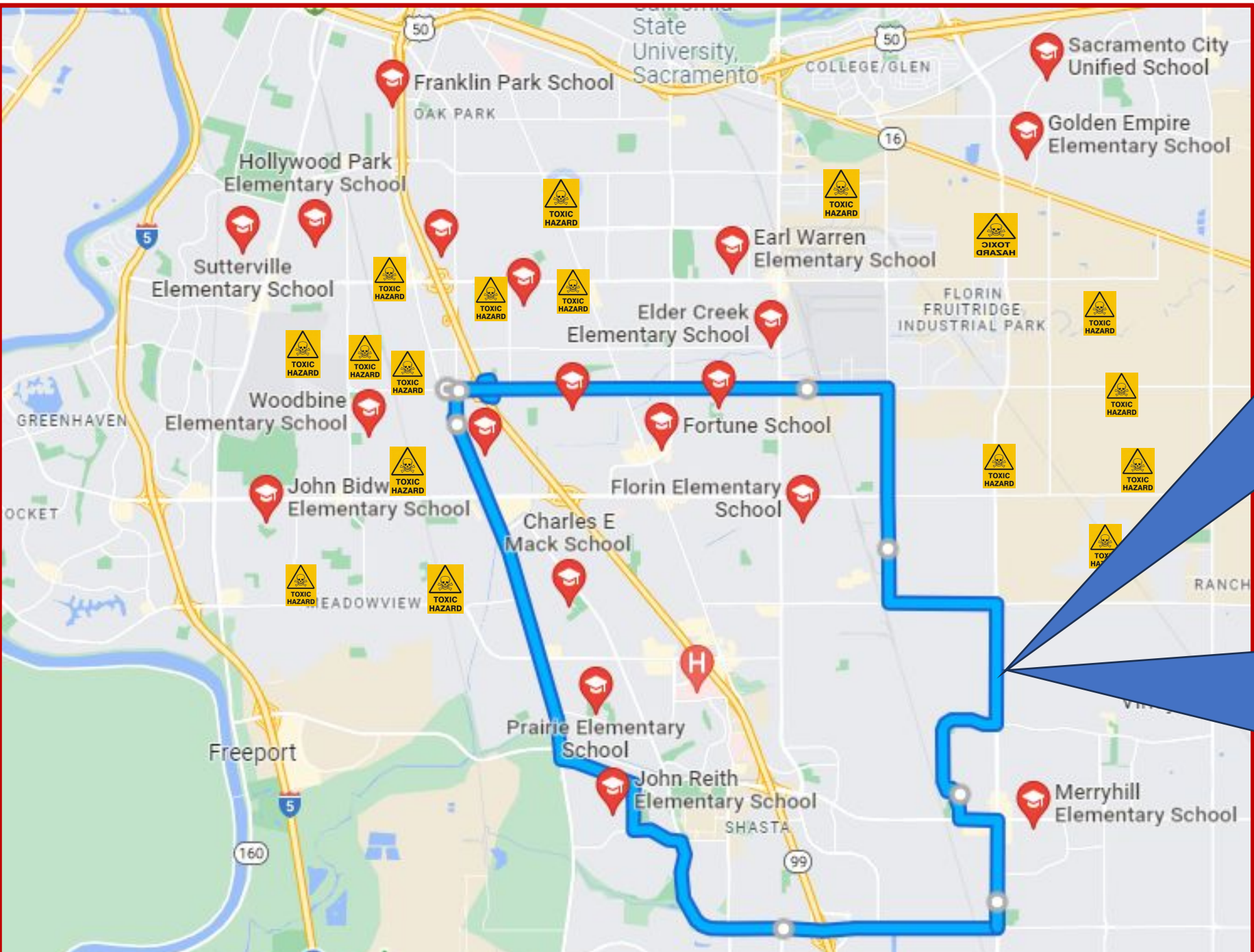
The State awarded South Sacramento about \$30million in AB617 funds to reduce air pollution
(That was over 4 years ago, and \$23Million have been spent already)

El Estado otorgó \$30 millones para el Sur de Sacramento con fondos de AB617 para reducir la contaminación en el aire. Eso fue hace 4 años, y \$23 millones se han usado.

Here are some examples of Non-Mobile polluters in South Sacramento:

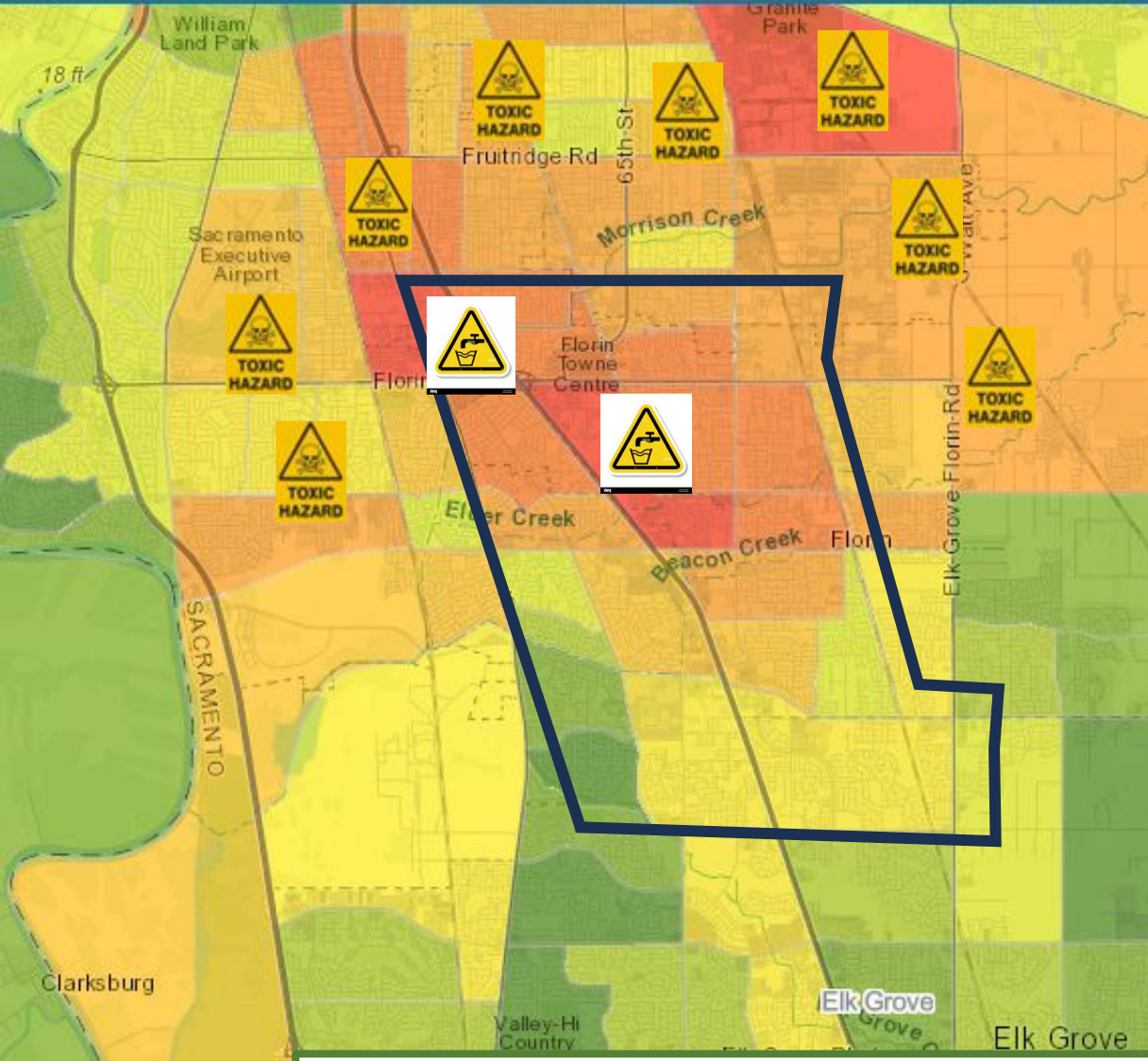
Ejemplos de estructuras fijas/No-mobiles que contaminan en Sur Sacramento:

- *The Executive Airport Lead-Fuel station and airplanes*
- *The old Campbell Soup Station*
- *Waste Management Stations*
- *Industrial Sites*

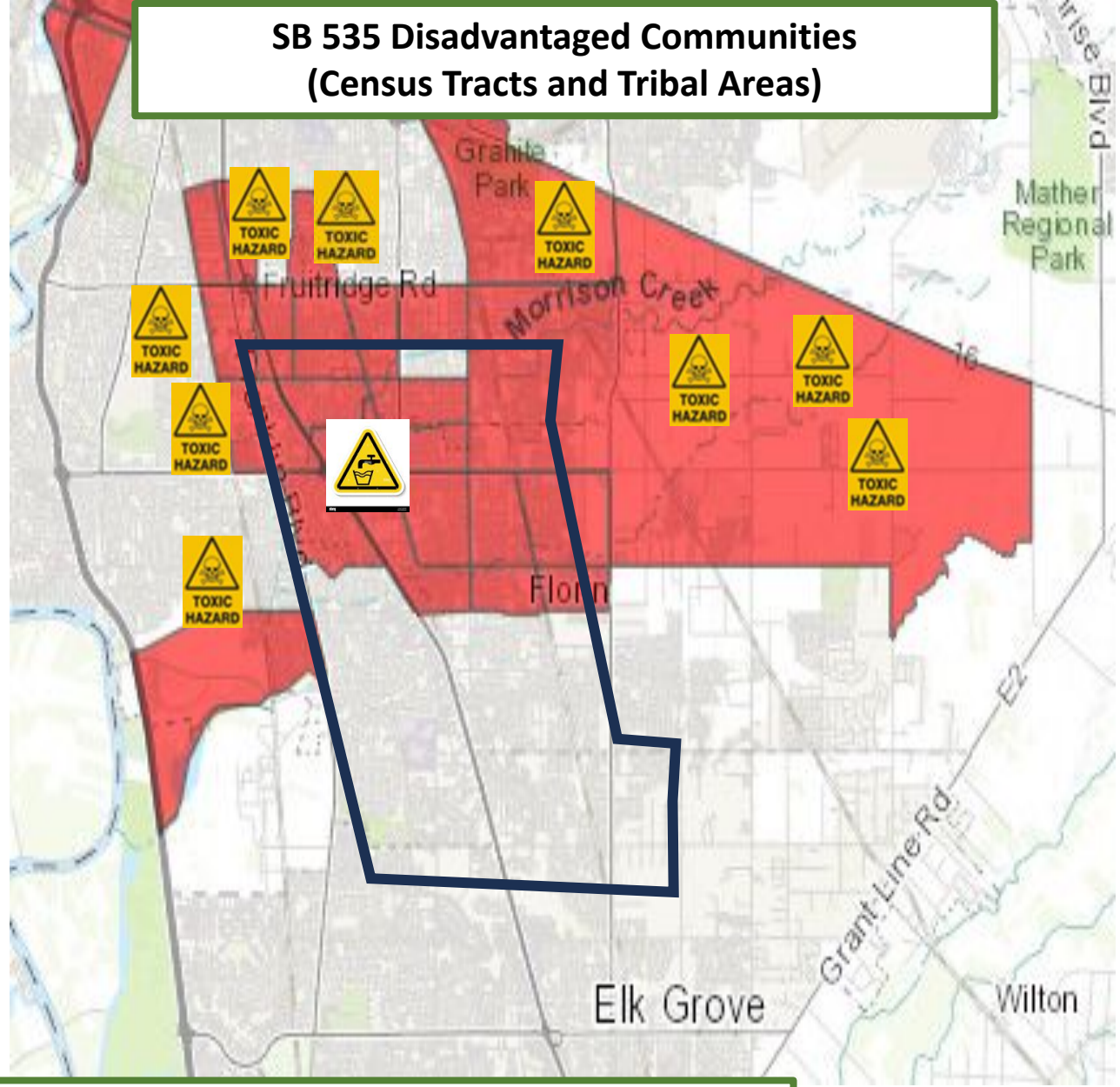


The AB617 Committee and the Sacramento Air Quality Management District (AQMD) decided to focus their work within these boundaries

El comité de AB617 y La Agencia a Cargo de la Calidad de Aire en Sacramento (AQMD) decidieron enfocarse solamente dentro de estas líneas/bordes

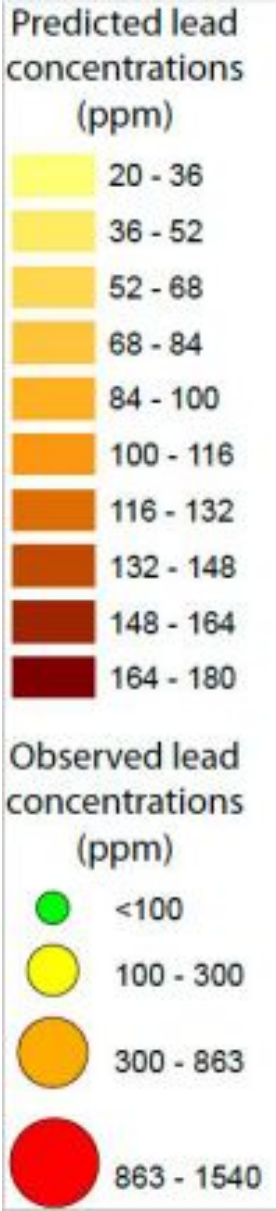
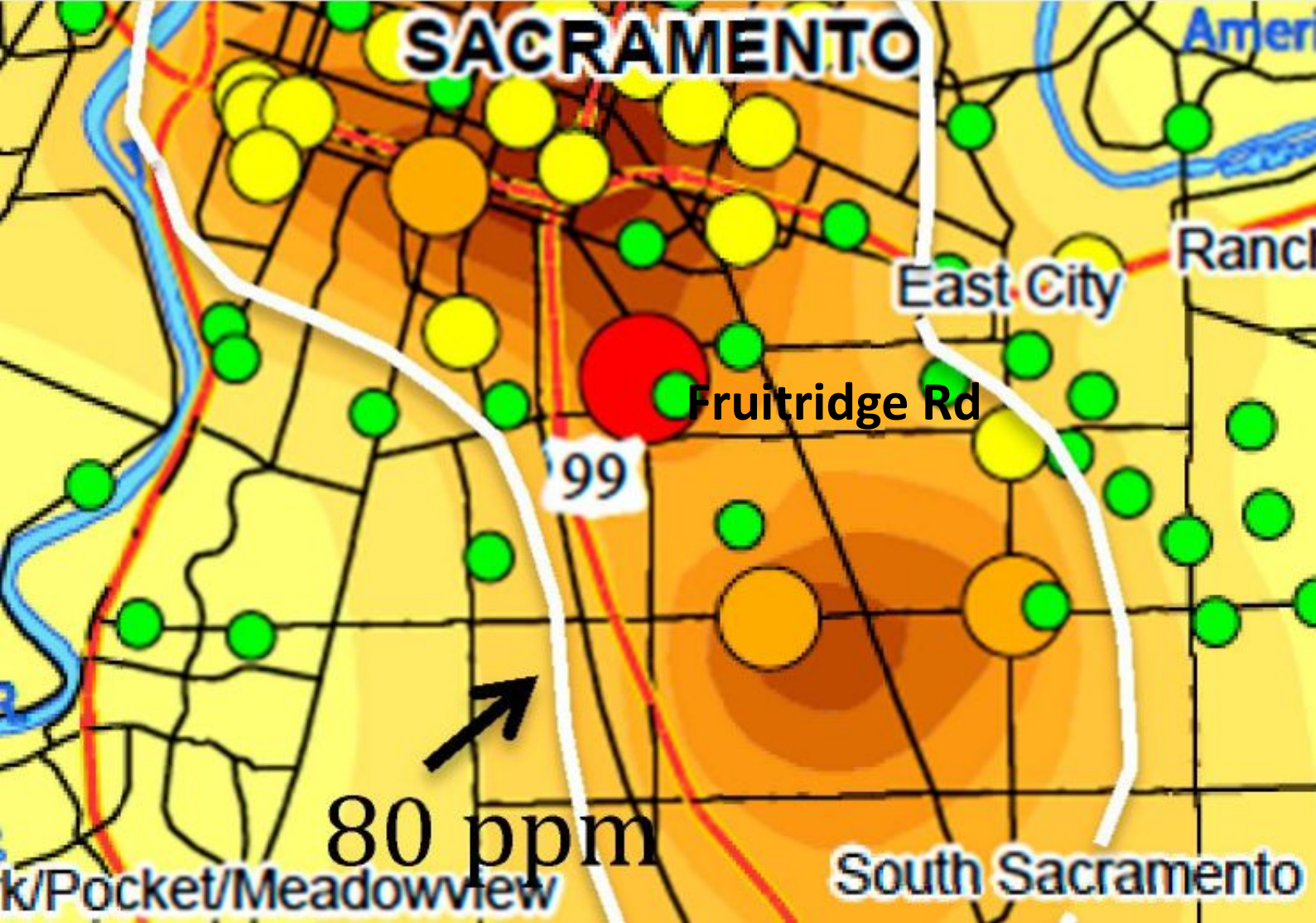


**SB 535 Disadvantaged Communities
(Census Tracts and Tribal Areas)**



Cal-Enviro Screen (poorest and most disadvantaged are Red and Orange)
Áreas mas marginadas con la población mas vulnerable en Rojo y Anaranjado
<https://oehha.ca.gov/calenviroscreen/report/calenviroscreen-40>

Lead concentrations according to the National Institute of Health (NIH)
Concentración de plomo de acuerdo al Instituto Nacional de Salud



<https://www.ncbi.nlm.nih.gov/pmc/articles/PMC4377958/>