

Severe weather

**AB32 Environmental Justice
Advisory Committee:
Final Recommendations for
Priority Changes to the
2030 Scoping Plan**

December 14, 2017

Mari Rose Taruc, EJAC Leadership Team

I've been learning about
global warming and one of the
effects is severe weather. Severe
weather is extreme weather some
examples of extreme weather are tsunamis
tornadoes, thunder storms, heat waves

The effects of severe weather
are when people and animals
lose their homes. The people
and animals might die
over that. It may
destroy the houses of
people. Animals houses will
be destroyed too like birds
and monkeys live on trees
and the lightning will zap
the tree in half and the bird
will have to move to another
tree and build its nest.



**Frontline Communities:
low income communities of color
are first and worst hit by climate change**

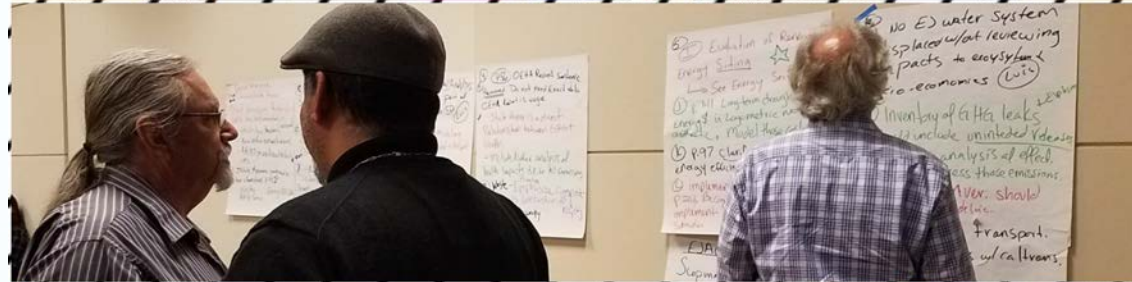


Frontlines of Crisis, Forefront of Change



EJAC Final Recommendations for Priority Changes to the 2030 Scoping Plan

- Biomass composting and recycling
- Transportation targets
- Prioritize direct emissions reductions
- Report localized emissions trends
- Model Cap-and-Trade program to meet 2030 targets



EJAC Final Recommendations for Priority Changes to the 2030 Scoping Plan: Biomass Composting and Recycling

In any discussion of waste in the Scoping Plan, prioritize and emphasize composting and recycling over biomass combustion.

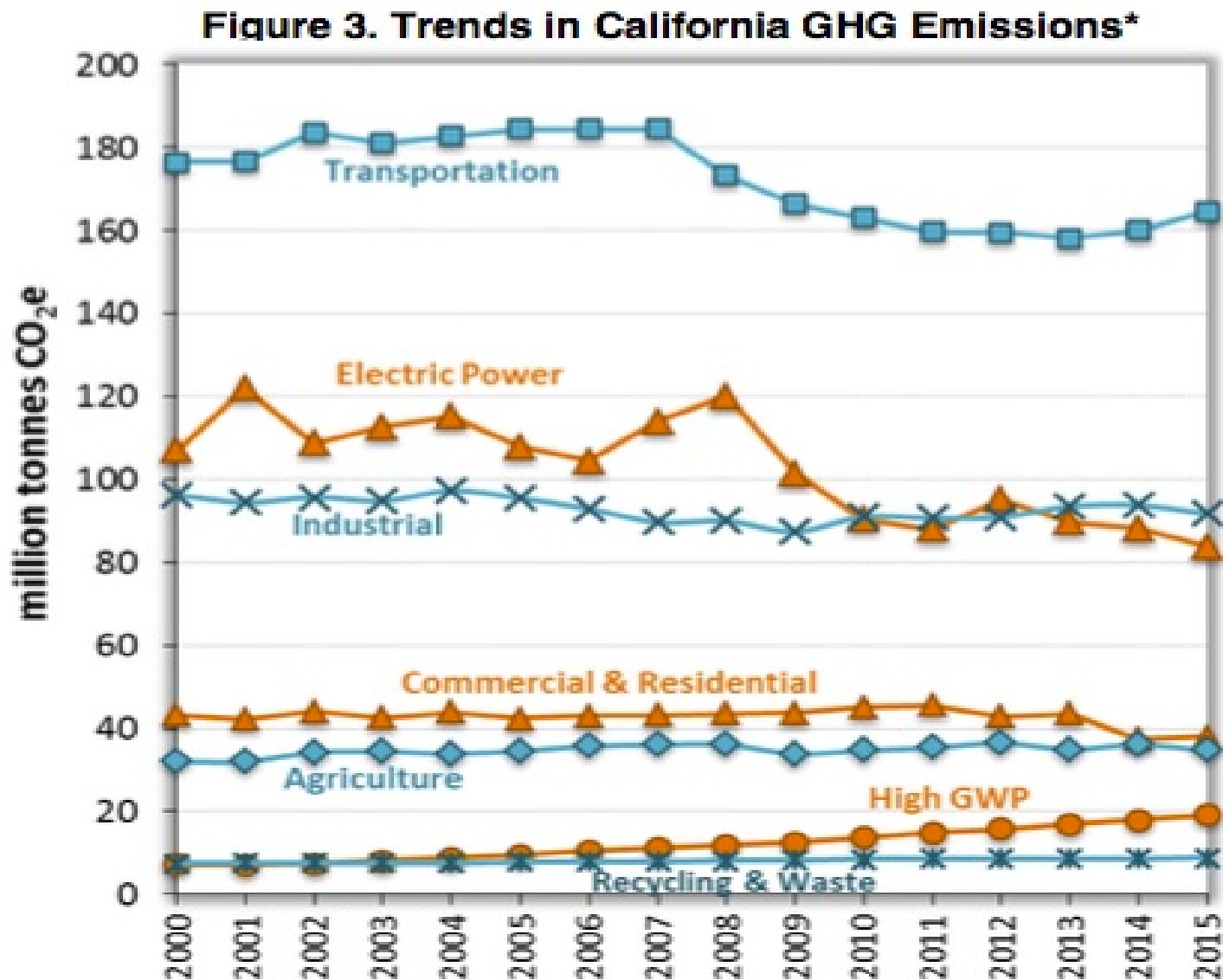


EJAC Final Recommendations for Priority Changes to the 2030 Scoping Plan: Transportation targets

Develop an emissions reduction target for the whole transportation sector.

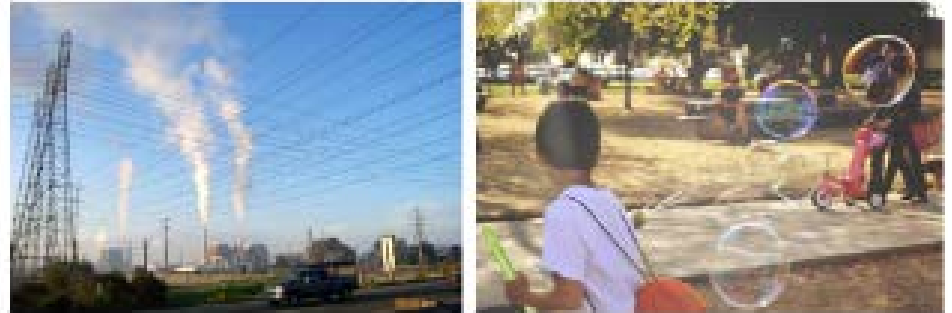


EJAC Final Recommendations for Priority Changes to the 2030 Scoping Plan



2016 EJ Assessment of Cap & Trade

- **Environmental racism:** neighborhoods within 2.5 miles of the 66 largest greenhouse gas and PM10 emitters have a 16% higher proportion of residents of color
- **Emissions are increasing in nearly all sectors:** cement, in-state electricity generation, oil & gas, and hydrogen plant sectors have increased GHGs over the baseline period (2011-2012)
- **CA is exporting climate benefits:** offset credits exceed the reduction in allowable GHGs (the “cap”) between 2013 and 2014 and were mostly linked to projects outside of CA



A PRELIMINARY ENVIRONMENTAL EQUITY ASSESSMENT OF CALIFORNIA'S CAP-AND-TRADE PROGRAM

By Lara J. Cushing^{1,2} Madeline Wander³ Rachel Morello-Frosch^{1,2}
Manuel Pastor⁴ Allen Zhu⁵ James Sadd⁶

¹University of California, Berkeley
Department of Environmental Science, Policy, and Management
²School of Public Health
³School of Engineering

⁴University of Southern California, Program for Environmental and Regional Equity (PERE)
⁵San Francisco State University, Department of Health Education
⁶Occidental College, Department of Geology

USC
Dornsife
Program for
Environmental and
Regional Equity

 School of
Public Health
UNIVERSITY OF CALIFORNIA, BERKELEY
 Berkeley
UNIVERSITY OF CALIFORNIA
College of
Environmental Studies



EJAC Final Recommendations for Priority Changes to the 2030 Scoping Plan: Prioritize direct emissions reductions

In the Scoping Plan, demonstrate how direct emissions reductions from the largest sources are prioritized as directed by AB 197, including the 25% industry, mobile source strategy, and 2.5x additional achievable energy efficiency measures as listed in Table III-6 of the Scoping Plan (p. 69) in the Proposed Scenario. Ensure that there is coordination of AB 197, AB 398 and AB 617 implementation and enforcement, especially for EJ communities.



TABLE 9: ESTIMATED SOCIAL COST (AVOIDED ECONOMIC DAMAGES) OF POLICIES OR MEASURES CONSIDERED IN THE 2017 SCOPING PLAN DEVELOPMENT[#]

Measure (Measures in bold are included in the Scoping Plan)	Range of Social Cost of Carbon \$ million USD (2015 dollars)**
50 percent Renewables Portfolio Standard (RPS)	\$55–\$250
Mobile Sources CTF and Freight	\$200–\$1,080
18 percent Carbon Intensity Reduction Target for LCFS -Liquid Biofuels	\$70–\$330
Short-Lived Climate Pollutant Strategy	\$860–\$2,260 (SC-CH ₄)
2x additional achievable energy efficiency in the 2015 IEPR	\$125–\$750
Cap-and-Trade Program	\$610–\$6,560
10 percent incremental RPS and additional 10 GW behind-the-meter solar PV*	\$250–\$1,160
25 percent Carbon Intensity Reduction Target for LCFS and a Low-Emission Diesel Standard - Liquid Biofuels*	\$90–\$415
20 percent Refinery	\$55–\$500
30 percent Refinery	\$20–\$250
25 percent Industry	\$20–\$415
25 percent Oil and Gas	\$35–\$330
5 percent Increased Utilization of RNG (core and non-core)	\$35–\$165
Mobile Source Strategy (CTF) with Increased ZEVs in South Coast and early retirement of LDVs with more efficient LDVs*	\$55–\$500
2.5x additional achievable energy efficiency in the 2015 IEPR, electrification of buildings (heat pumps and res. electric stoves) and early retirement of HVAC*	\$70–\$580
Carbon Tax	\$775–\$8,300
All Cap-and-Trade	\$700–\$6,890
Cap-and-Tax	\$775–\$8,300
Scoping Plan Scenario SC-CO ₂	\$1,060–\$8,970
Scoping Plan Scenario SC-CH ₄	\$860–\$2,260
Scoping Plan Scenario (Total)	\$1,920–\$11,230

**EJAC:
Prioritize
direct
emissions
reductions**

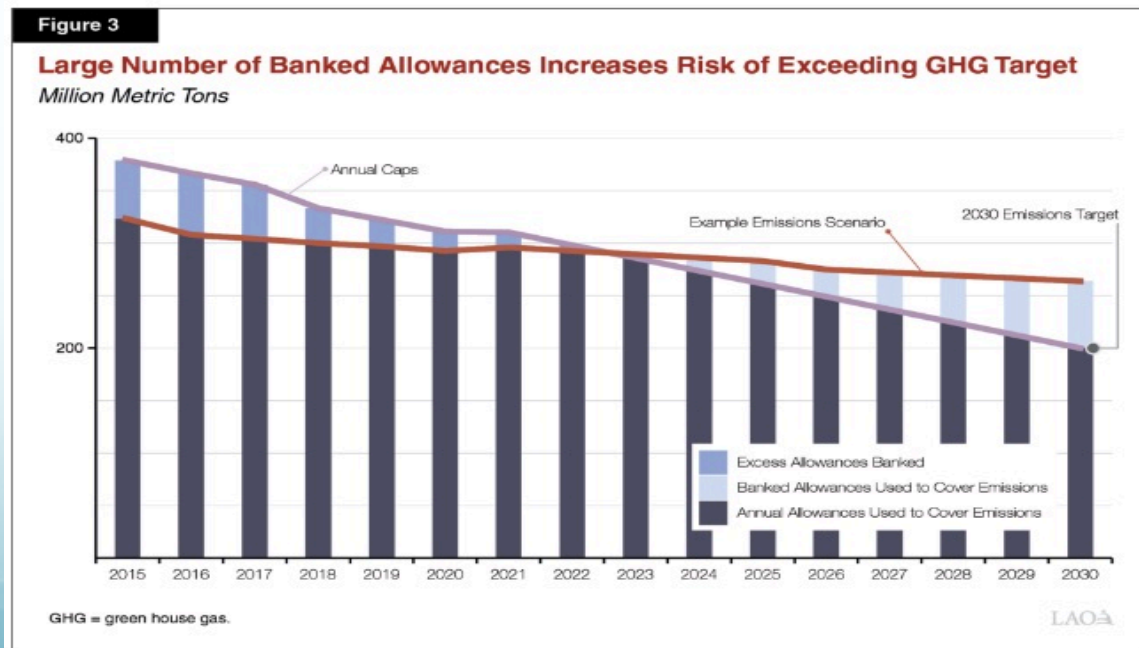
EJAC Final Recommendations for Priority Changes to the 2030 Scoping Plan: Report localized emissions trends

Study and report emissions trends in environmental justice communities as part of Cap-and-Trade inclusion in the Scoping Plan: increases and decreases of emissions in Cap-and-Trade facilities and sectors over time (immediate and long-term modeling) in the most disadvantaged communities using CalEnviroScreen. Finalize and implement the Adaptive Management Plan to keep the tools to evaluate Cap-and-Trade facilities on localized emissions. CARB should fill critical data gaps.



EJAC Final Recommendations for Priority Changes to the 2030 Scoping Plan: Model Cap-and-Trade program to meet 2030 targets

While we still find Cap-and-Trade problematic for EJ communities, we need CARB to evaluate how the Cap-and-Trade model will meet 2030 emissions targets by modeling the program between 2020 and 2030 to avoid issues with overallocation and banking of allowances, price, offsets, and out-of-state sources. Identify results from those evaluations.



EJAC Final Recommendations for Priority Changes to the 2030 Scoping Plan

Environmental Justice Approaches for Scoping Plan and Climate Programs

- Partnership With EJ Communities
- Equity
- Coordination
- Economic Opportunity
- Long-Term Vision

