



# LOCAL GHG MITIGATION FOR CEQA & CAP USING SUSTAINABLE LAND INITIATIVE

ANDY MUTZIGER - Planning Division Manager, SLO County APCD

MICHAEL LARCHER – Executive Director, Upper Salinas-Las Tablas Resource Conservation District

**AEP 2025**  
CA State Conference  
Seeds of Change,  
Waves of  
Progress



April 6-9, 2025 at Zachari Dunes on  
Mandalay Beach, Oxnard CA

BEET THE HEAT

Air Quality & Climate Change Workshop - Part 1

# TIPS & RESOURCES

## 5 Session - Webinar Series

### Balance: Getting to carbon neutrality through sequestration & offsets

- ▶ Carbon Markets: The Basics
- ▶ Carbon Markets: Supply-side Considerations
- ▶ Carbon Markets: Demand-side Considerations
- ▶ *\*Beyond Carbon Markets: Holistic & Integrated Projects and Stewardship*
- ▶ Carbon Markets: Bringing it all Together
- ▶ Resources Supporting Session Topics

### SLO County APCD 2023 CEQA GHG Guidance & Thresholds

- ▶ Recommends local GHG mitigation for threshold exceedances – **2025 Update Project**
  - ▶ *\* US-LT RCD's Sustainable Land Initiative – GHG reduction/Carbon sequestration projects*
  - ▶ WattCarbon – Built Environment Retrofits



UPPER SALINAS-LAS TABLAS  
**RESOURCE**  
CONSERVATION DISTRICT

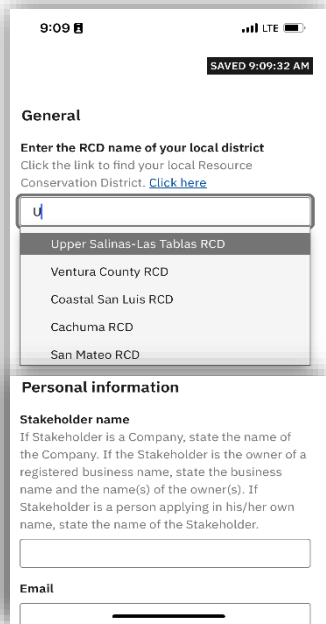
# The Sustainable Land Initiative

Using digitalization to create verifiable GHG reduction projects on natural and working lands

# Sustainable Land Initiative (SLI) Process

*By standardizing what RCDs already do and digitizing the process, the SLI is drastically increasing the speed at which landowners adopt sustainable land practices in line with NRCS conservation practices.*

## Submit an intake form



9:09 AM LTE

SAVED 9:09:32 AM

**General**

Enter the RCD name of your local district  
Click the link to find your local Resource Conservation District. [Click here](#)

U

Upper Salinas-Las Tablas RCD

Ventura County RCD

Coastal San Luis RCD

Cachuma RCD

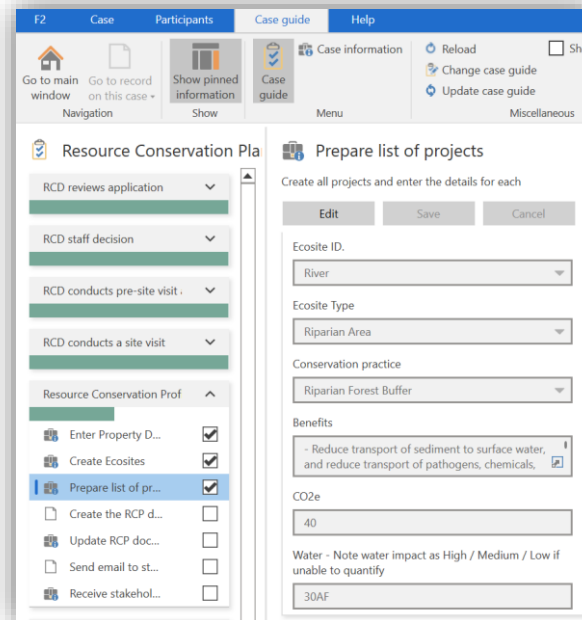
San Mateo RCD

**Personal information**

**Stakeholder name**  
If Stakeholder is a Company, state the name of the Company. If the Stakeholder is the owner of a registered business name, state the business name and the name(s) of the owner(s). If Stakeholder is a person applying in his/her own name, state the name of the Stakeholder.

**Email**

## Consistently document and quantify practices



F2 Case Participants Case guide Help

Go to main window Go to record on this case Show pinned information Case guide Case information Reload Change case guide Update case guide

Resource Conservation Plan

RCD reviews application

RCD staff decision

RCD conducts pre-site visit

RCD conducts a site visit

Resource Conservation Prof

Enter Property D... ☒

Create Ecosites ☒

Prepare list of pr... ☒

Create the RCP d... ☐

Update RCP doc... ☐

Send email to st... ☐

Receive stakehol... ☐

Prepare list of projects

Create all projects and enter the details for each

Edit Save Cancel

Ecosite ID.  
River

Ecosite Type  
Riparian Area

Conservation practice  
Riparian Forest Buffer

Benefits  
- Reduce transport of sediment to surface water, and reduce transport of pathogens, chemicals, ...

CO2e  
40

Water - Note water impact as High / Medium / Low if unable to quantify  
30AF

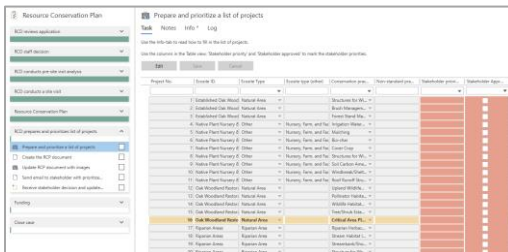
## Accelerated implementation



# Carbon Farm Plan Development

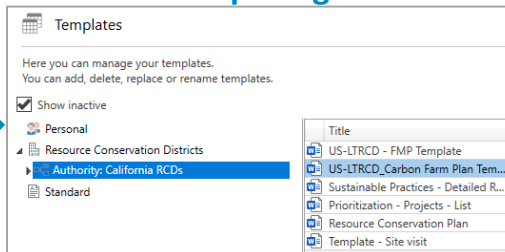
*Pulling data from the F2 database into templates reduces operating costs and drastically accelerates Carbon Farm Plan creation.*

## Standard data captured in SLI



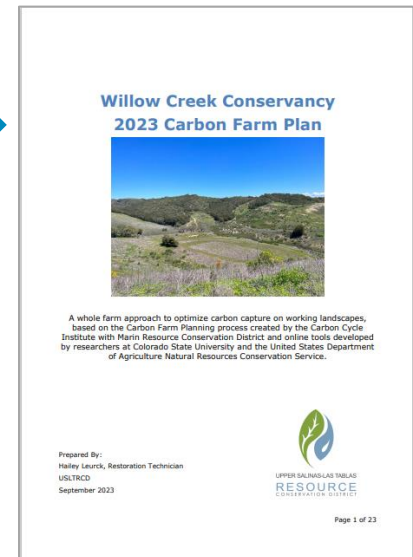
Project ID	Project Name	Project Type	Conservation Plan	Status
1	Established Old World	Restoration	Restoration by M...	
2	Established Old World	Restoration	Restoration by M...	
3	Established Old World	Restoration	Restoration by M...	
4	Native Plant Community	Other	Restoration by M...	
5	Native Plant Community	Other	Restoration by M...	
6	Native Plant Community	Other	Restoration by M...	
7	Native Plant Community	Other	Restoration by M...	
8	Native Plant Community	Other	Restoration by M...	
9	Native Plant Community	Other	Restoration by M...	
10	Native Plant Community	Other	Restoration by M...	
11	Native Plant Community	Other	Restoration by M...	
12	Oak Woodland Habitat	Restoration	Restoration by M...	
13	Oak Woodland Habitat	Restoration	Restoration by M...	
14	Oak Woodland Habitat	Restoration	Restoration by M...	
15	Oak Woodland Habitat	Restoration	Restoration by M...	
16	Oak Woodland Habitat	Restoration	Restoration by M...	
17	Restoration Area	Restoration	Restoration by M...	
18	Restoration Area	Restoration	Restoration by M...	
19	Restoration Area	Restoration	Restoration by M...	
20	Restoration Area	Restoration	Restoration by M...	
21	Restoration Area	Restoration	Restoration by M...	

## One click template generation



Title	Description	Status
US-LTRCD - FMP Template		
US-LTRCD_Carbon Farm Plan Tem...		
Sustainable Practices - Detailed R...		
Prioritization - Projects - List		
Resource Conservation Plan		
Template - Site visit		

## Final Carbon Farm Plan



**Willow Creek Conservancy  
2023 Carbon Farm Plan**

A whole farm approach to optimize carbon capture on working landscapes, based on the Carbon Farm Planning process created by the Carbon Cycle Institute with Marin Resource Conservation District and online tools developed by researchers at Colorado State University and the United States Department of Agriculture Natural Resources Conservation Service.

Prepared By:  
Hayley Leurs, Restoration Technician  
USLTRCD  
September 2023

UPPER SALINAS-LAS TABLAS  
RESOURCE  
CONSERVATION DISTRICT

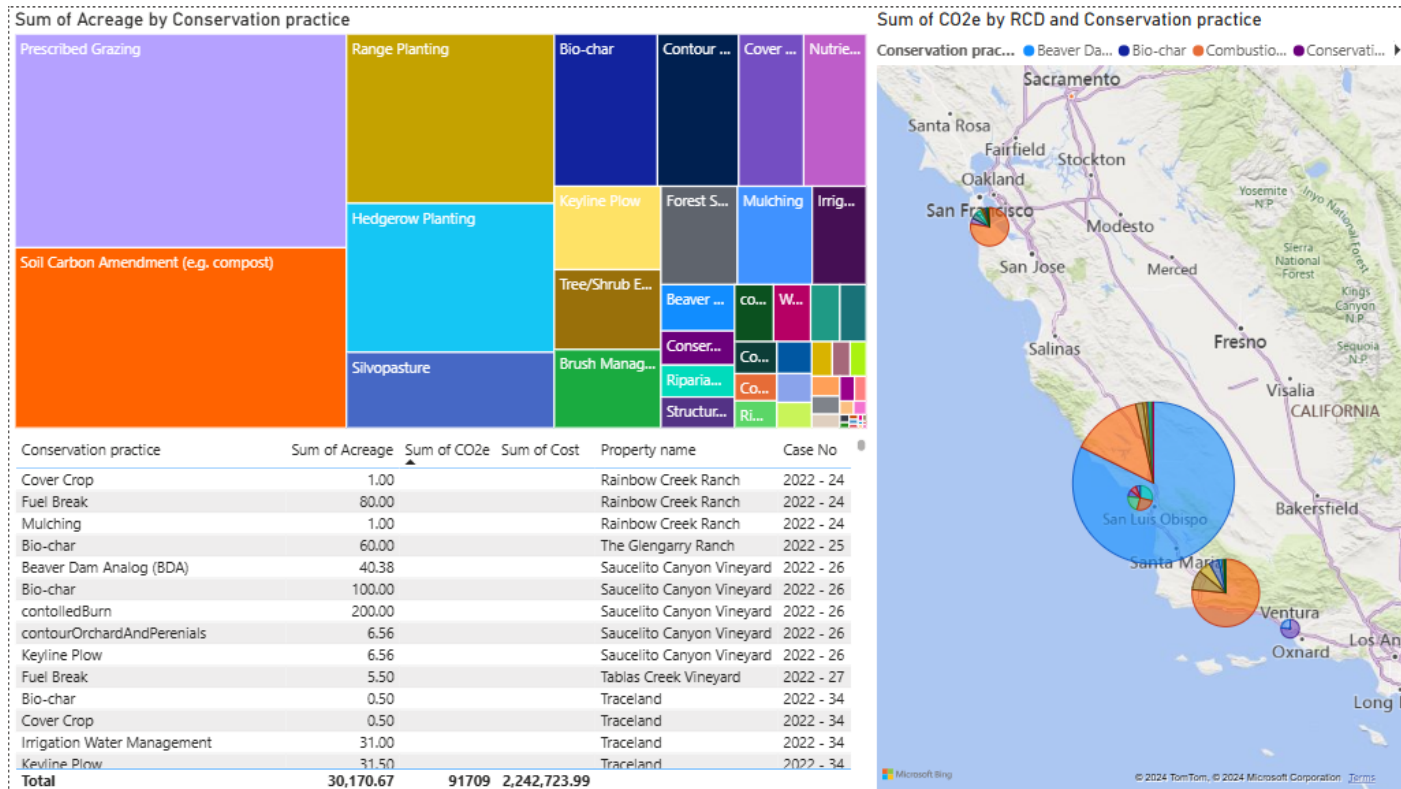
Page 1 of 23

**Note** – *Using this methodology, USLTRCD has reduced Carbon Farm Planning from 12 months to 2 days.*

*We have developed 14 CFPs and will develop an additional 11 in the next 6 months.*

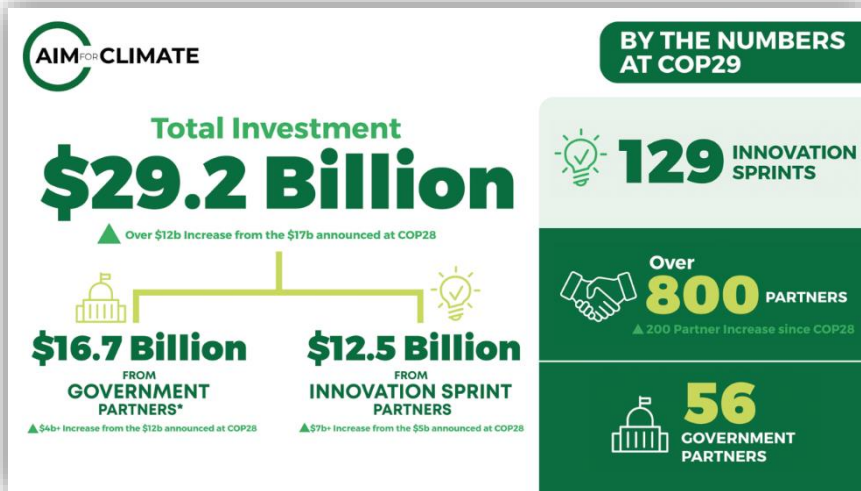
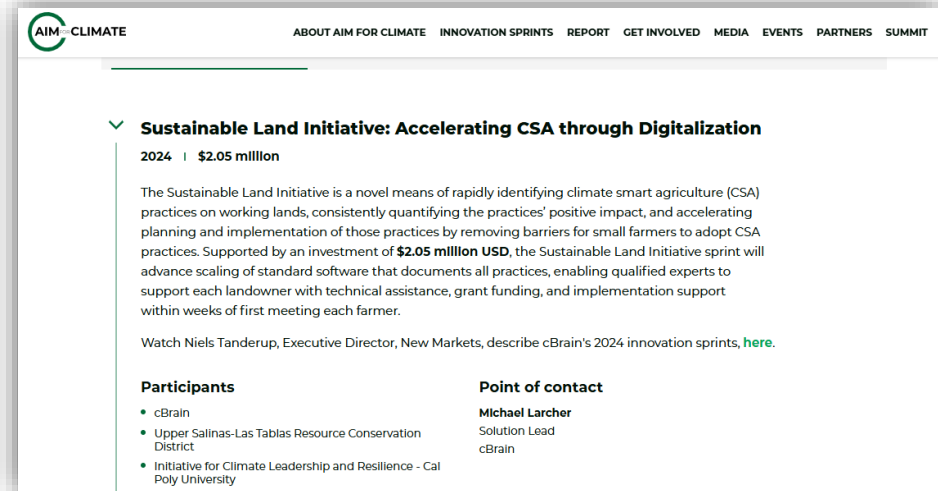
# Inventory of GHG reducing projects

*We now have an inventory of shovel ready projects with verifiable greenhouse gas reductions. Tracked and monitored within a digital system of record.*



# RCDs are California's Best Kept Secret... No Longer

*In November USDA Secretary Tom Vilsack unveiled that the Sustainable Land Initiative was selected as an Innovation Sprint for AIM for Climate to help drive climate resilience and combat climate change.*

**AIM FOR CLIMATE** ABOUT AIM FOR CLIMATE INNOVATION SPRINTS REPORT GET INVOLVED MEDIA EVENTS PARTNERS SUMMIT

▼ **Sustainable Land Initiative: Accelerating CSA through Digitalization**  
2024 | \$2.05 million

The Sustainable Land Initiative is a novel means of rapidly identifying climate smart agriculture (CSA) practices on working lands, consistently quantifying the practices' positive impact, and accelerating planning and implementation of those practices by removing barriers for small farmers to adopt CSA practices. Supported by an investment of **\$2.05 million USD**, the Sustainable Land Initiative sprint will advance scaling of standard software that documents all practices, enabling qualified experts to support each landowner with technical assistance, grant funding, and implementation support within weeks of first meeting each farmer.

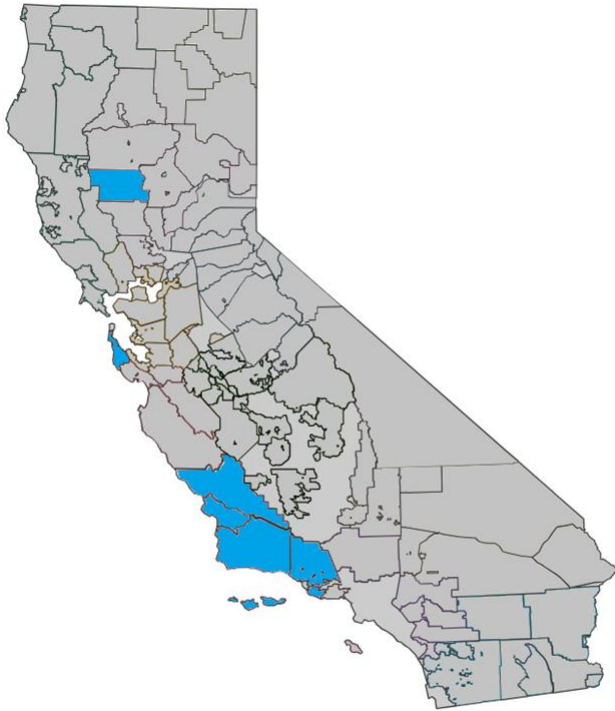
Watch Niels Tanderup, Executive Director, New Markets, describe cBrain's 2024 innovation sprints, [here](#).

<p><b>Participants</b></p> <ul style="list-style-type: none"> <li>cBrain</li> <li>Upper Salinas-Las Tablas Resource Conservation District</li> <li>Initiative for Climate Leadership and Resilience - Cal Poly University</li> </ul>	<p><b>Point of contact</b></p> <p><b>Michael Larcher</b> Solution Lead cBrain</p>
--	---

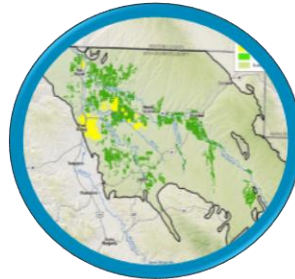


# What's in store for 2025

*In 2025 six districts will be using SLI to accelerate sustainable land practice adoption and new digitized solutions will facilitate rapid grant administration and reimbursement.*



Zoom into any  
groundwater  
district



## RCDs on SLI

1. Upper Salinas-Las Tablas RCD
2. Coastal San Luis RCD
3. Cachuma RCD
4. Ventura RCD
5. Glenn Co RCD
6. San Mateo RCD

## New Digitized Processes

- GRASS-C Sustainable Cannabis Certification (live)
- Equipment Rental
- Grant Management



# QUESTIONS?

[Andy Mutziger](#) | Division Manager - Planning & Grants

SLO County Air Pollution Control District

(805) 781-5956 VM • [amutziger@co.slo.ca.us](mailto:amutziger@co.slo.ca.us)

<https://www.slocleanair.org/rules-regulations/land-use-ceqa/ceqahandbook.php>

[Michael Larcher](#) | Executive Director

US-LT Resource Conservation District

[larcher@us-ltrcd.org](mailto:larcher@us-ltrcd.org)

<https://www.us-ltrcd.org/sustainable-land-initiative-ec3829e>



UPPER SALINAS-LAS TABLAS  
RESOURCE  
CONSERVATION DISTRICT



SLO COUNTY  
apcd