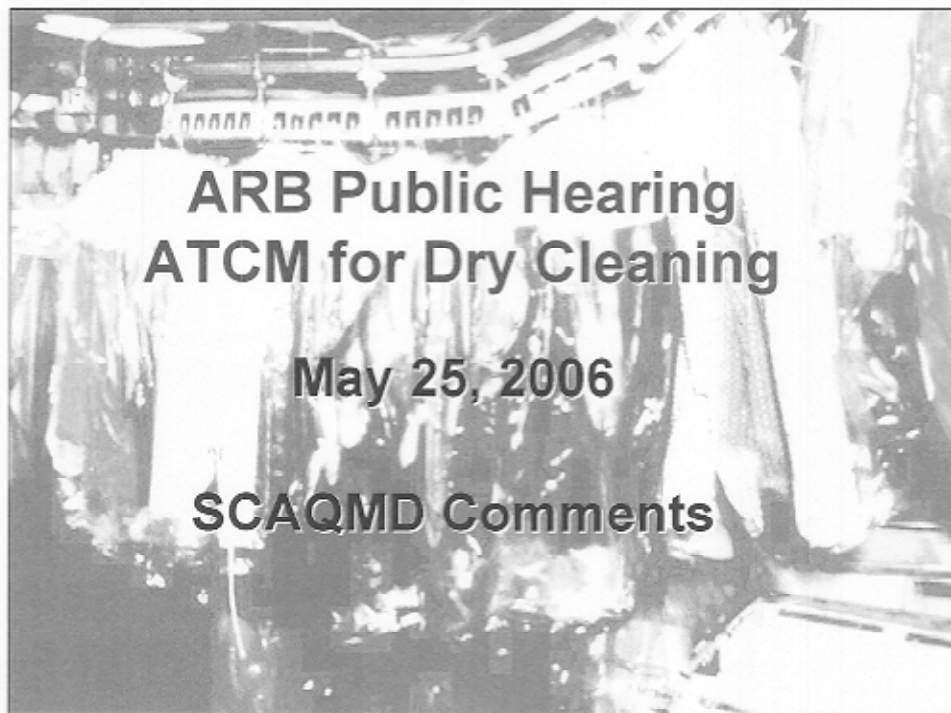


*Jill Whynot*

*06-5-2*



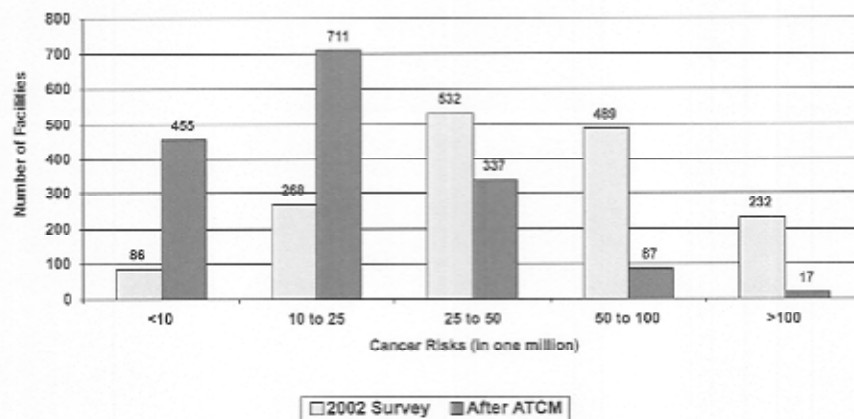
## Key Policy Considerations

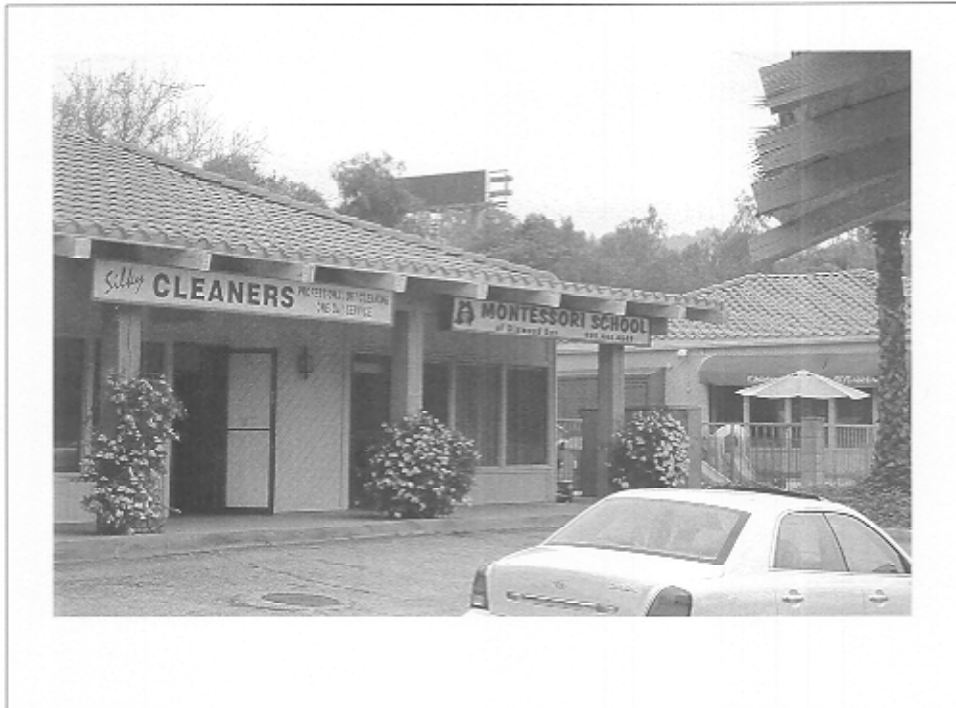
- ATCM should not be based on averages
- Dilution, not emission reductions
- Environmental trade-off – cancer or ozone

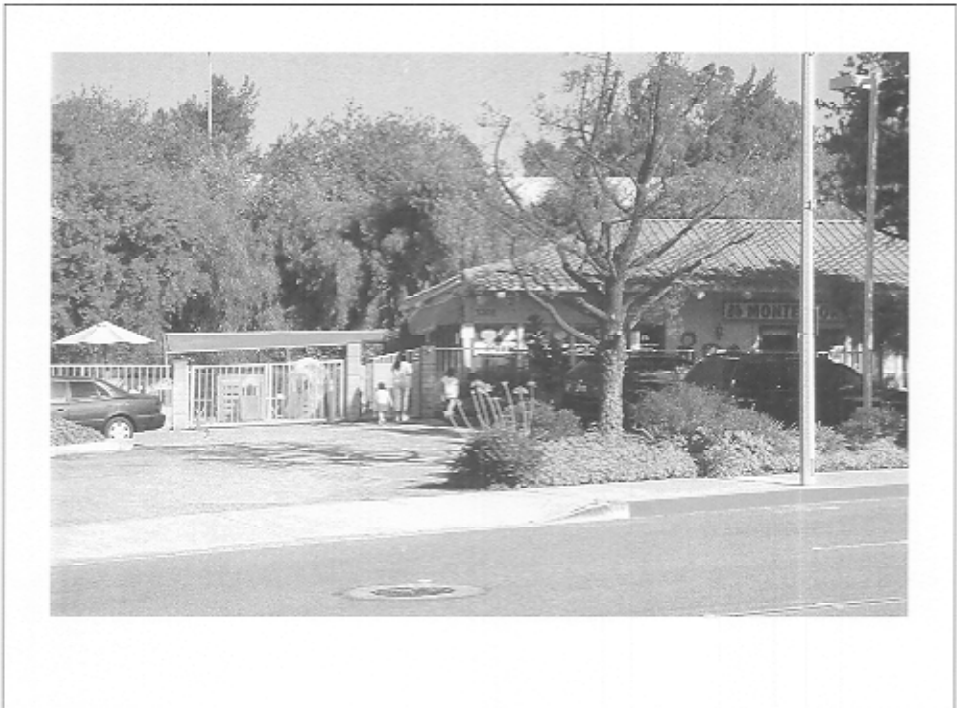
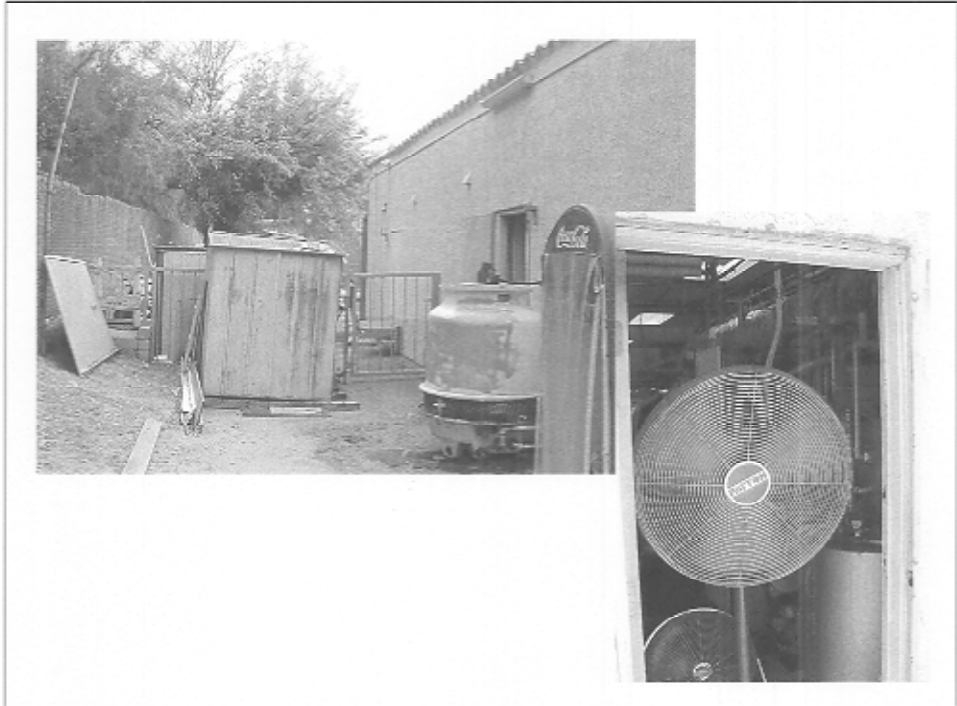
## ATCM Should Not be Based on Averages

- Meteorology varied
- Usage & distance to receptor varied
- Residual risks after implementation too high

## Residual Risks in South Coast if ATCM Implemented



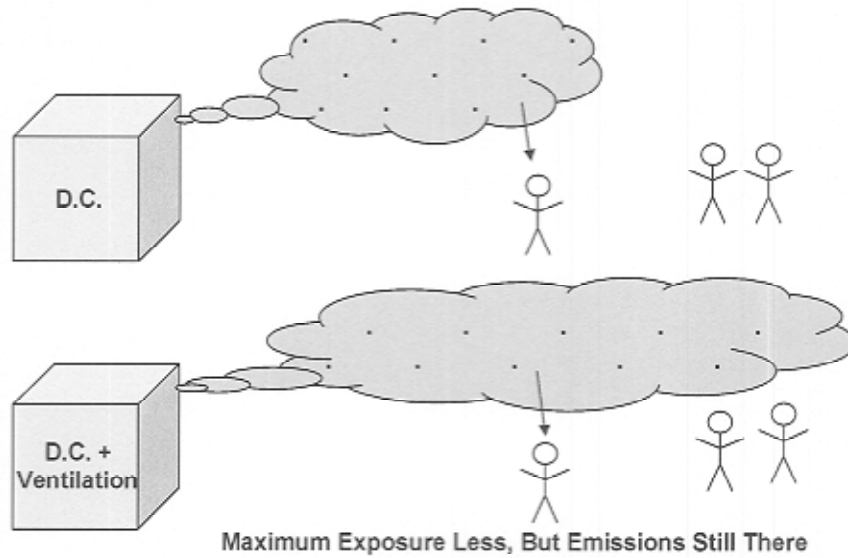




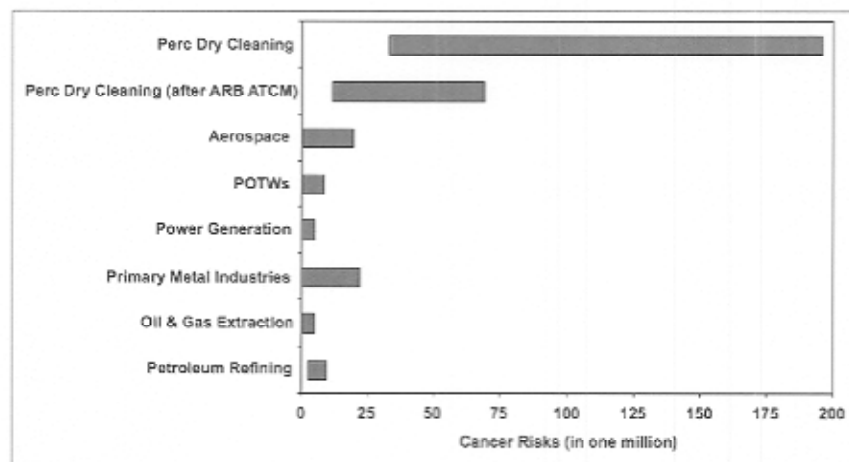




## Dilution, Not Emission Reduction



## Risk Comparison to Other Industries (South Coast)



## Recommendations

- Environmental trade off justifiable
- Continue to support cleaner technologies with grants and demonstration sites
- Be as health-protective as possible – phase out perc