

Robert
Smeling

07-1-5

Liquid Carbon Dioxide Cleaning Machine

CO₂ What it has to offer you
in today's cleaning world.

Carbon Dioxide (CO₂)

CO₂ is a process that has been developed for use by commercial and retail drycleaners. CO₂ is a non-flammable, non toxic, colorless naturally-occurring gas that when subjected to pressure, becomes a liquid solvent. The CO₂ used in this process is an industrial by-product from existing operations, primarily anhydrous ammonia (fertilizer) production. There is no net increase in the amount of CO₂ emitted; therefore, this process does not contribute to global warming. CO₂ is also naturally occurring, and used in other applications such as carbonating soft drinks.

CO₂ comes from:

- Humans and Animals exhale CO₂.
- The atmosphere, consisting of roughly 0.03% CO₂.
- Directly from CO₂ wells at high concentrations.
- By-products from ammonia plants, fermentation from rum & ethanol plants and hydrogen plants within refineries.
- Other sources include ethylene oxide, natural gas processing plants and extractions from flue gases.

CO₂ is Completely

- ✓NON-Flammable
- ✓NON-Carcinogenic
- ✓NON-Toxic
- ✓NON-Polluting
- ✓Odorless
- ✓Tasteless
- ✓Biodegradable
- ✓Organic

Major Applications for CO₂ are:

- Beer & Soft Drink Carbonation
- Freezing Foods
- Fire Extinguishing
- Pharmaceuticals
- Welding
- Rocket Fuels
- Crude Oil Recovery
- PH control in water
- Grain Fumigant
- Pressurizing Aerosols
- Electronics
- Dry Cleaning

CO₂ Cleaning – Process Benefits

- 35 minute cleaning cycle dry-to-dry.
- Cool Operating temperatures.
- Totally hazardous free.
- No air or ground water contamination.
- Less waste disposal.
- No heat setting of stains.
- No cleaning risks on leather, furs sequins or buttons.
- Typical 30 to 40 % increased garment life.
- Less machine maintenance.
- Double the equipment life.
- Completely Organic both ends for the consumer's and the Environment.

Garments Cleaned in 2006

- ✓ 263,175 Garments
- ✓ 5,237 Loads
- ✓ 50 lb Average
- ✓ 35 Average min. wash time
- ✓ 716 lb Average fill ups weekly of CO₂
- ✓ 11 cents a lb
- ✓ Waste pick up 30 gal in 4 years cost ___?

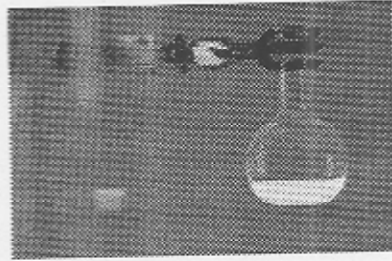
What Does CO₂ get out

- Everything that you have done in Perc and with more Options.
- You are working with 4 to 6oz of soap.
- The soap itself can remove 99 % of all dry side stains.
- You can also remove wet side stains.



What spotting agents are there in the market

- ✓ Kreussler
- ✓ Street's
- ✓ Caled
- ✓ Wash Point
- ✓ Dow



The soap Manufactures are always improving the soap of CO₂



THANK YOU VERY MUCH
FOR LEARNING ABOUT
DRY CLEANING WITH
CO₂