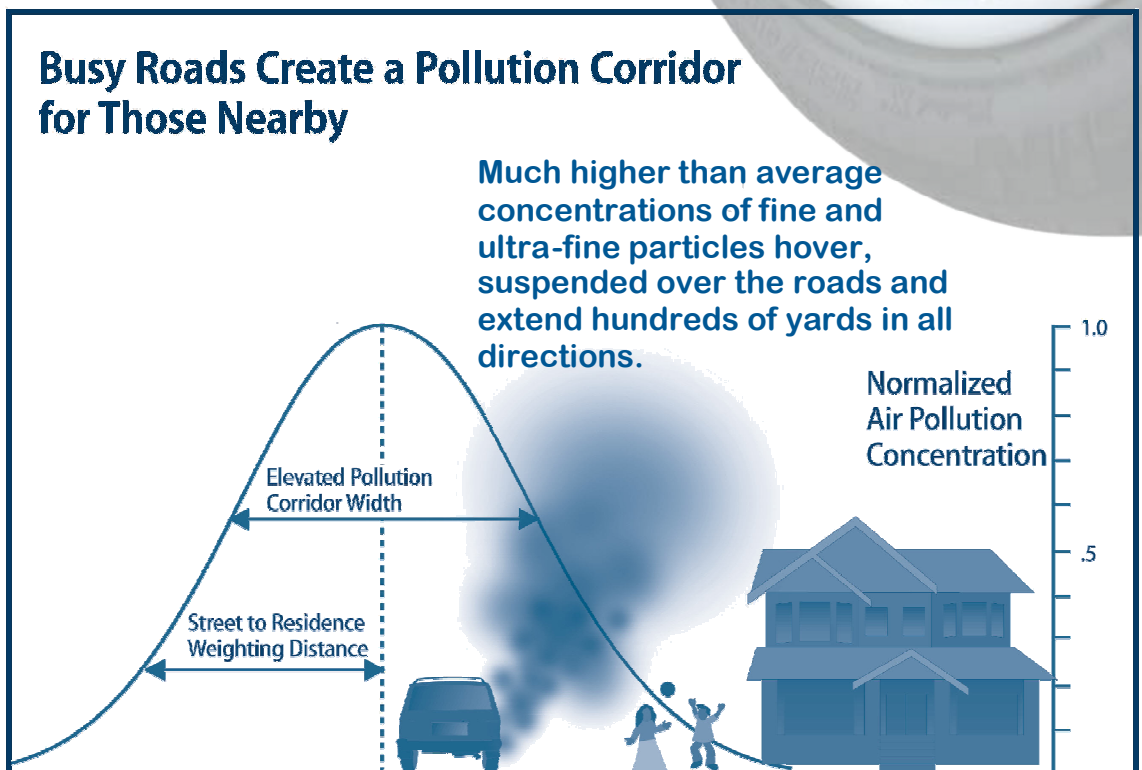


StreetVac™

Road Pollution Filters

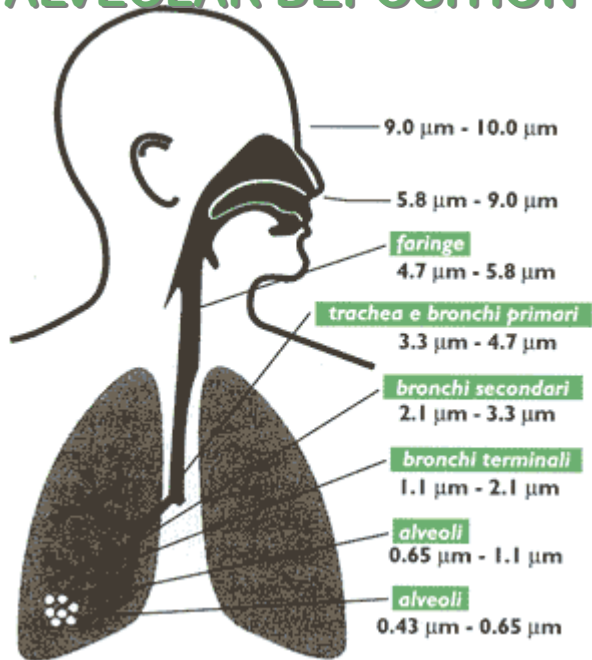
StreetVac International, Inc. has developed an innovative product to enable governments around the world to clean up pollution deposits on the roads caused by vehicle emissions, ambient deposition, brake dust, and tire wear. Using our patented system, vehicles are able to capture more pollutants than they emit by virtually vacuuming fine particles from the road surface. Captured pollutants can be easily and safely disposed of or recycled into clean energy. The proper use of the product will improve both air and water quality in our world.

- In 2004, the average American daily duration for driving a car was 101 minutes.
- Urban Americans spend more time on or near roads every year.
- Reducing human exposure risk on and near roads will yield immediate benefits



Courtesy Air and Waste Management Association.

ALVEOLAR DEPOSITION



PARTICLE DEPOSITION IN THE ALVEOLI, THE TINY AIR SACKS OF THE LUNGS

Large particles are trapped before they get deep into the lungs. The smaller the particle size, the greater the alveolar deposition. These deposits are the root cause of lung diseases, irritants to asthma sufferers and also carry carcinogens and other hazardous chemical agents.

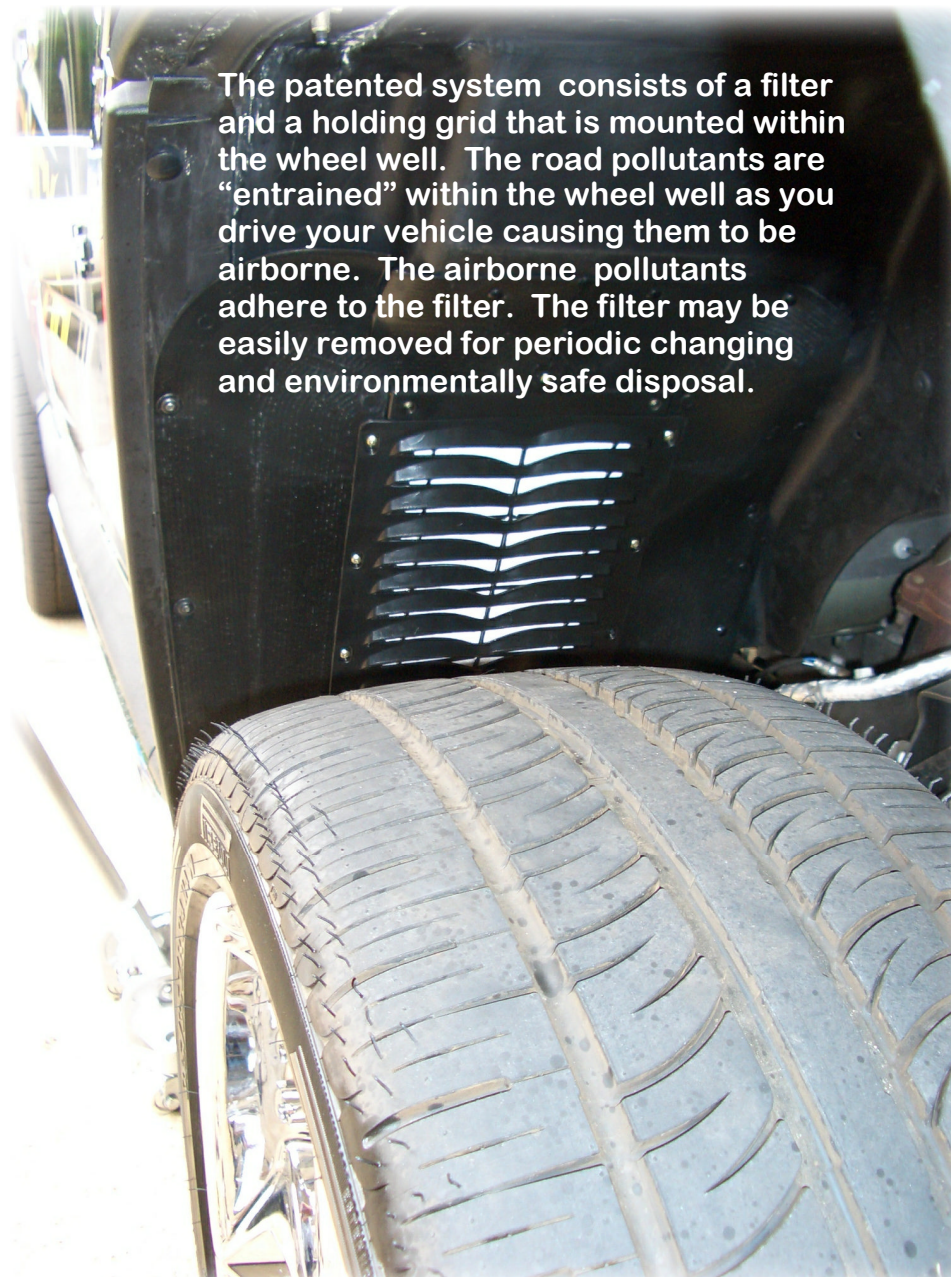
There is no doubt that when enough vehicles are equipped with this system, the rate of removal of fine and ultra-fine particles could be greater than their rate of introduction into the environment along the roadways. Therefore, this system is a viable tool to help meet with EPA ambient air standards for PM_{2.5} particles in an environment where the majority of people spend a large part of their time - the roadways.

If the government's intent is to reduce human exposure to fine particles, wide deployment of this system in non-attainment areas is justifiable.

**William A. Farone, PhD, "Atmospheric Particulate Removal Potential Of the Street-Vac System", Applied Power Concepts, January 12, 2006*

For more information, contact:

StreetVac International, Inc.
Jeffrey J. Krantz, President
7192 Kalaniana'ole Hwy, E206A
Honolulu, HI. 96825
(808) 781-2004
(808) 394-5353
krantz3K@aol.com



The patented system consists of a filter and a holding grid that is mounted within the wheel well. The road pollutants are "entrained" within the wheel well as you drive your vehicle causing them to be airborne. The airborne pollutants adhere to the filter. The filter may be easily removed for periodic changing and environmentally safe disposal.