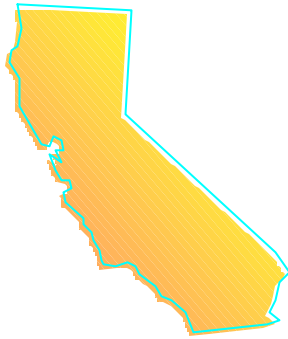


# Maritime Air Quality Technical Working Group

---



## Statewide Commercial Harbor Craft Survey Results

December 3, 2003

California Environmental Protection Agency



**Air Resources Board**

## California Statewide Commercial Harbor Craft Survey

- **Survey focuses on harbor craft**
  - fishing boats, tug boats, ferries, work boats
- **Collected data on vessels & activity for 1999-2001**
  - vessel age and use, engine information, fuel usage
- **Data to be used to improve inventory and support efforts to reduce emissions**

## Vessel Data

- **Collected data on 900 vessels and 1800 engines**
- **Most common home ports:**
  - San Diego, San Francisco, Los Angeles, Bodega Bay, Moss Landing
- **Vessel age ranged from new to 99 years**

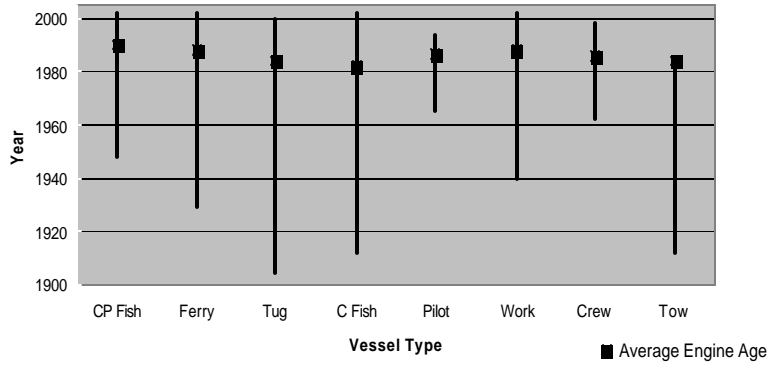


## Most Common Vessel Use Reported Was Commercial Fishing

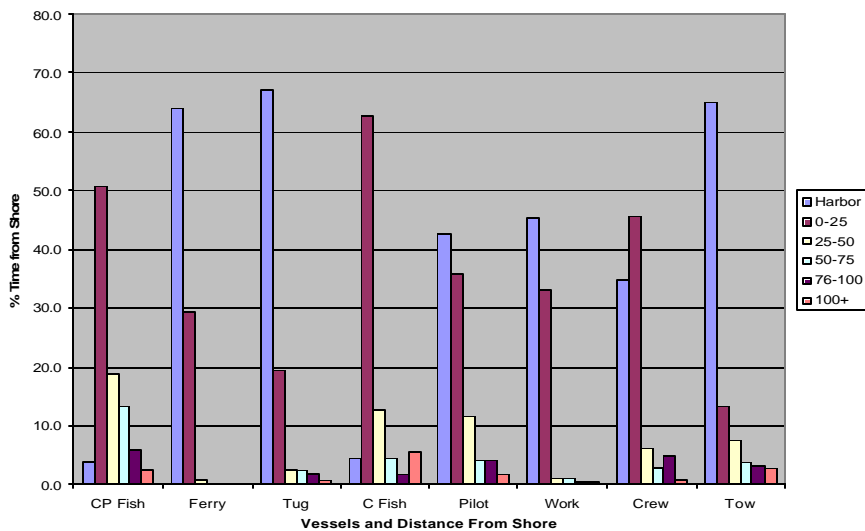
- |                                |     |
|--------------------------------|-----|
| • Commercial Fishing           | 51% |
| • Commercial Passenger Fishing | 11% |
| • Ferry / Excursion            | 9%  |
| • Tug Boats                    | 8%  |
| • Work Boats                   | 7%  |
| • Other                        | 7%  |
| • Tow Boat                     | 2%  |
| • Crew Boat                    | 2%  |
| • Pilot Boat                   | 1%  |

# Vessel Age Range and Average Engine Age

Vessel Age Range with Average Propulsion Engine Age



# Percent of Vessel Hours Operated and Distance from Shore



## Propulsion and Auxiliary Engine Data

- **40% vessels had auxiliary engines**
  - average 75 hp
  - 80% 1970 model year or newer
- **63% vessels had one propulsion engine, 36% had 2 or more**
  - average 500 hp
  - 52% reported dry exhaust
  - 80% 1970 model year or newer

## ARB Contacts

- **Kirk Rosenkranz**  
e-mail: [krosenkr@arb.ca.gov](mailto:krosenkr@arb.ca.gov)  
phone: 916.327.7843
- **Todd Sterling**  
e-mail: [tsterlin@arb.ca.gov](mailto:tsterlin@arb.ca.gov)  
phone: 916.445.1034

