



# Air Resources Board



**Matthew Rodriguez**  
Secretary for  
Environmental Protection

**Mary D. Nichols, Chairman**  
1001 I Street • P.O. Box 2815  
Sacramento, California 95812 • [www.arb.ca.gov](http://www.arb.ca.gov)

**Edmund G. Brown Jr.**  
Governor

March 13, 2014

Mr. Jim Gray  
Vice President / Plant Manager  
Modern Custom Fabrication, Inc.  
2421 E. California Avenue  
Fresno, California 93721

Dear Mr. Gray:

Air Resources Board (ARB) staff received an email inquiry on the behalf of Modern Custom Fabrication, Inc. regarding the installation of ARB certified Phase I Enhanced Vapor Recovery (EVR) systems on SuperVault aboveground storage tanks (AST) equipped with integral spill containers. As you are aware, SuperVault ASTs are currently certified by Executive Orders VR-301, *Standing Loss Control for Existing Installations*, and VR-302, *Standing Loss Control for New Installations*.

Based on the certification application materials submitted by Modern Custom Fabrication, Inc. and the results of the certification test, ARB staff has determined that SuperVault ASTs equipped with integral spill containers and drain plugs are suitable for use with the Phase I EVR systems described in Executive Orders VR-401 and VR-402. Furthermore, ARB staff has determined that Modern Custom Fabrication, Inc. SuperVault ASTs equipped with integral spill containers do not require the use of external spill containers manufactured by OPW or Morrison Brothers as indicated in Executive Orders VR-401 and VR-402, respectively.

In the next revision of Executive Orders VR-401 and VR-402, specifications, images, line drawings, and performance standards pertaining to the Modern Custom Fabrication, Inc. SuperVault integral spill container configurations will be added to the appropriate Exhibits. The ARB approved Installation, Operation, and Maintenance Manual will also be updated to include the procedure to install the "Product Side" portion of the Phase I system within the SuperVault integral spill container configurations.

While ARB completes the Executive Order review process, SuperVault AST owners/operators and installation contractors who wish to utilize integral spill containers can follow the assembly drawing and installation instruction provided as enclosures to

*The energy challenge facing California is real. Every Californian needs to take immediate action to reduce energy consumption. For a list of simple ways you can reduce demand and cut your energy costs, see our website: <http://www.arb.ca.gov>.*

California Environmental Protection Agency

Mr. Jim Gray  
March 13, 2014  
Page 2

this letter. Please note that this letter may be utilized until the Executive Order revision process is complete.

If you have questions, please contact Donielle Jackson at (916) 445-9308, or via email at [dljackso@arb.ca.gov](mailto:dljackso@arb.ca.gov), or Lou Dinkler at (916) 324-9487, or via email at [ldinkler@arb.ca.gov](mailto:ldinkler@arb.ca.gov).

Sincerely,



George Lew, Chief  
Engineering and Certification Branch  
Monitoring and Laboratory Division

Enclosures

cc: Jon Adams  
San Diego County Air Pollution Control District

Jim Swaney  
San Joaquin Valley Air Pollution Control District

Bob McLaughlin  
Butte County Air Quality Management District

Magen Holloway  
Bay Area Air Quality Management District

Randy Smith  
San Diego County Air Pollution Control District

Randy Matsuyama  
South Coast Air Quality Management District

Kevin Tokunaga  
Glenn County Air Pollution District

James Parsegian  
Department of Forestry and Fire Protection

Mr. Jim Gray  
March 13, 2014  
Page 3

cc continued:

Amit Gupta  
Department of Industrial Relations

John Roach  
Department of Food and Agriculture

Mike Lattner  
Morrison Brothers

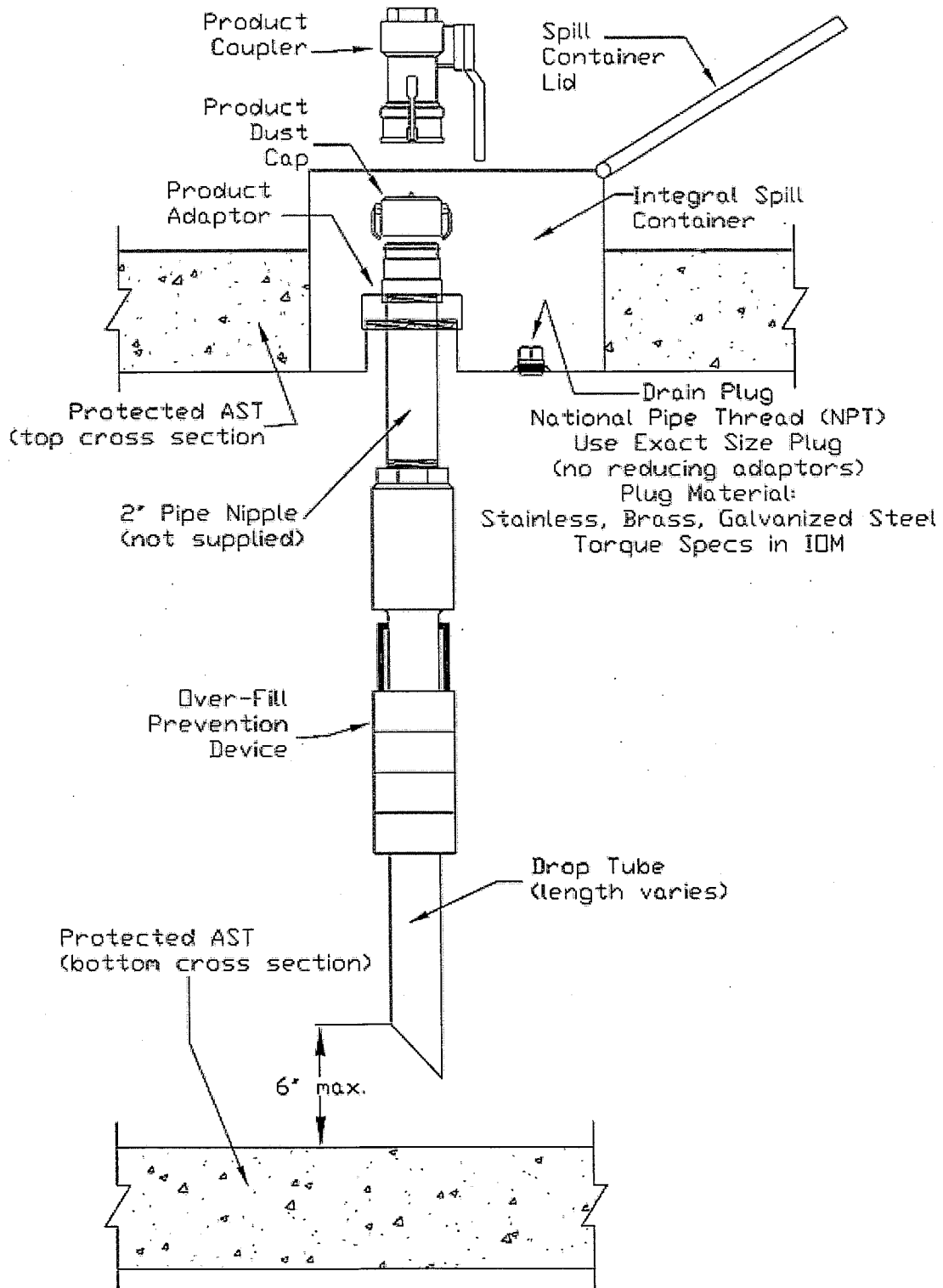
Keith Simons  
OPW Fueling Components

Douglas Olenick  
OPW Fueling Components

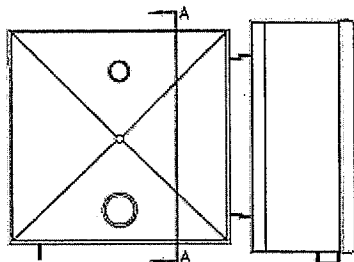
Lou Dinkler  
Air Resources Board

Donielle Jackson  
Air Resources Board

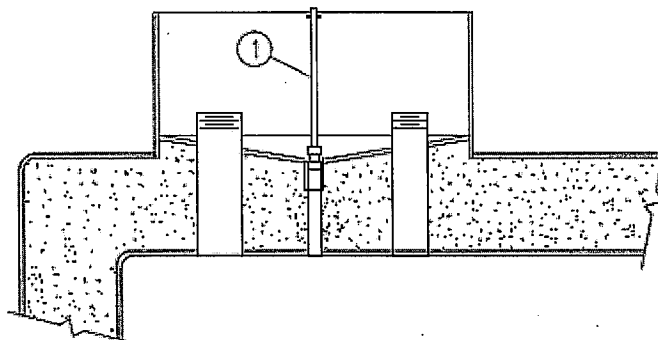
**Figure 1: Typical "Product Side" Assembly Drawing for SuperVault AST with Integral Spill Container with Drain Plug**



**Figure 2: Installation Instructions for SuperVault Aboveground Storage Tanks with Integral Spill Container with Drain Plug**



**TOP VIEW**



**SECTION A-A**

**INTEGRAL SPILL CONTAINER DRAIN PLUG**

- NOTE: INSTALL ALL PERMANENT PIPING AND FITTINGS USING SUITABLE THREAD SEALANT MATERIAL.
- REMOVE EXISTING 3/4" DRAIN VALVE (ITEM 1 IN SECTION A-A).
- PLACE NEW DRAIN PLUG IN THE (3/4" NPT) OPENING IN THE SPILL CONTAINER.
- HAND TIGHTEN THE DRAIN PLUG.
- TIGHTEN THE DRAIN PLUG TO 25 - 30 FOOT POUNDS OF TORQUE.
- ALL UNUSED TANK OPENINGS MUST BE PROPERLY PROPERLY SEALED USING THREADED PIPE PLUGS, FLANGES OR CAPS.
- PRESSURE TEST THE TANK USING THREE INCHES WATER COLUMN PRESSURE AND SOAP SOLUTION TO ENSURE THE DRAIN PLUG IS LEAK TIGHT (PRESENCE OF BUBBLES INDICATES A LEAK).
- DO NOT WELD ON THE TANK, MODIFY, OR PENETRATE THE TANK STRUCTURE IN ANY WAY WITHOUT THE EXPRESSED WRITTEN PERMISSION OF THE TANK MANUFACTURER.

**SUPERVAULT MH INTEGRAL SPILL CONTAINMENT**  
**PHASE I EQUIPMENT UPDATE**

Specifications subject to change without notice.



modern custom  
fabrication

**SUPERVAULT<sup>®</sup> MH**  
**MULTI-HAZARD RATED, PROTECTED TANK**

DATE : 1/13/14	REVISION No. : 0	REVISION DATE :	DRAWING NUMBER -
-------------------	---------------------	-----------------	---------------------